

Borough of

Fall/Winter 2022-23

AMBLER

HOMETOWN NEWS

www.boroughofambler.com



© Chris Raines

Borough of Ambler – 131 Rosemary Avenue - Ambler, PA 19002 – 215-646-1000

ALLISON WOLF

Hard working, Ambler-focused Realtor with a proven track record.
Committed to our community, Ambler resident and volunteer.

Featured in Philadelphia Magazine as a Five Star Real Estate Agent for 13 years in a row (2010-2022). BHHS Fox & Roach Chairman's Circle Platinum Award Winner, ranking in the top 1% of the entire Berkshire Hathaway national network.

215-704-9888 (direct & best number)
215-542-2200 (office)
allison.wolf@foxroach.com
AmblerRambler.com
721 Skippack Pike, Blue Bell, PA 19422



BERKSHIRE HATHAWAY
HomeServices

Fox & Roach, REALTORS®



Ambler19002
The Allison Wolf Team



Keep it Local Shop the Co-op



300+
Local Vendors
Supported



Ambler 217 E. Butler Ave.
Community-owned markets, open to everyone.
www.weaversway.coop

\$ Financing Available \$

Mention **CODE AD175** to receive
\$100 off vehicle purchase



Zacone Motors, Inc.

175 ROSEMARY AVENUE • AMBLER, PA 19002

Serving the Public in the Ambler Community since 1983

Pre-Owned BMW, Mercedes, Audi, Lexus, Infiniti, Acura
Wholesale/Retail • Foreign-Domestic Repairs • State Inspection

SALES AND SERVICE • 215.643.6520

www.zaconemotors.com



SPRING HOUSE WINDOW & DOOR

908 North Bethlehem Pike
Spring House, Pa 19477-0244

215.283.9000

- The area's premier dealer for over 30 years
- We have our own factory trained installers
- We offer a lifetime warranty on installation
- Free "no pressure" in-home estimates



www.GoSpringHouse.com

PA LIC# 6172



ANTON II



FUNERAL HOME, INC.

Peter "Skip" Urban, Supervisor, Lower Gwynedd Resident
Peter A. Urban, Jr., Funeral Director, Upper Dublin Resident



Honor a Life Well Lived

1111 South Bethlehem Pike Ambler, PA
215-646-8556 UrbanFuneralHome.com

Ambler Main Street 's 2022 Fall & Winter Events

29
OCT

THE HALLOWEEN EXTRAVAGANZA

DOWNTOWN AMBLER | 11:00 AM

25
NOV

BLACK FRIDAY AND HOLIDAY TREE LIGHTING

THE FRONT LAWN AT FIRST PRESBYTERIAN CHURCH | 5:00 PM

26
NOV

SMALL BUSINESS SATURDAY

DOWNTOWN AMBLER | 11:00 AM

03
DEC

HOLIDAY PARADE

DOWNTOWN AMBLER | 1:00 PM

08
DEC

SANTA ARRIVES BY TRAIN

SEPTA LOT SOUTH SIDE | 7:00 PM

09
DEC

HOLIDAY SHOPPING WEEKEND FRIDAY, SATURDAY AND SUNDAY

DOWNTOWN AMBLER | 11:00 AM

16
JAN

RESTAURANT WEEK BEGINS AND RUNS UNTIL JANUARY 22ND

DOWNTOWN AMBLER | 12:00 PM



VISIT WWW.amblermainstreet.org

ENVIRONMENTAL CORNER

Smoke Detector Recycling

Frank X. Browne, Ph.D., P.E.

Consultant, Northern Montgomery County Recycling Commission (NMCRC)

Smoke detectors are life-saving devices that should be in everyone's home. Smoke detectors have an expiration date—10 years for smoke detectors and 5 to 7 years for combination smoke and carbon monoxide detectors. So how do you dispose of an expired smoke detector?

The answer to this question depends on the type of smoke detector. There are two types of smoke detectors: ionizing and photoelectric.



IONIZING SMOKE DETECTORS use a tiny amount of a radioactive isotope and electrically charged plates to detect smoke. When smoke enters the detector, it stops the flow of ions between the two electrically charged plates, causing the alarm to sound. Ionizing smoke detectors are best at detecting flaming fires.

PHOTOELECTRIC SMOKE DETECTORS contain a light sensor and a light aimed away from the sensor. When smoke enters the detector, the light is reflected onto the light sensor, causing the alarm to sound. Photoelectric smoke detectors are best at detecting smoldering fires.

There are also dual sensors which contain both types of detectors in one unit. You can identify the type of smoke detector by looking at the back. If you see a radioactive symbol (pictured with this article), then you have an ionizing or dual sensor smoke detector. The back of the smoke detector has the manufacture date, which you can use to determine the expiration date.

Smoke detectors are not accepted at Montgomery County household hazardous waste or E-waste recycling events or drop-off locations. Photoelectric smoke detectors can be thrown in your household trash after removing the battery. Due to the radioactive material in ionizing smoke detectors, they must be recycled; however, they cannot be put into a household recycling bin. There are two options for properly recycling ionized or dual sensor smoke detectors:

Return to manufacturer: many companies will accept their brand of ionizing smoke detectors for recycling. The United States Postal Service provides a list of manufacturers that accept smoke detectors and their addresses. You must pay for postage and, in some cases, a small fee for recycling. Google provides a free shipping label to recycle their Google Nest smoke detectors.

Smoke detector recycling kit: Curie Environmental Services offers a smoke detector recycling kit to recycle ionizing smoke detectors, regardless of brand. The kits include proper shipping materials and paid postage. The kit will be shipped to your home, and you can simply add your smoke detectors (battery removed) and drop off with the shipping carrier listed on the postage.

For more information on recycling smoke detectors, go to www.northmontcorecycle.com.



What NOT to Recycle

NEVER PLACE THE FOLLOWING ITEMS IN YOUR RECYCLING CART!

Garden hoses, Ropes, Chains, Extension Cords, Christmas Lights, Automotive Parts (such as brakes or engine components), Wood, Trees, Household Electronics, Household Appliances, Construction & Demolition Debris, Tarps, Tools, Nails & Building Materials, Propane Containers, Plastic & Metal Banding or Strapping, Bed Sheets, Jeans & Clothes.

MONTCO PA
RECYCLES



MontcoPARecycles.org

Stay tuned for County-sponsored Collection events posted next spring!

For up-to-date A-Z Recycling Information on “what to do when you're done with it” check out the MontcoPARecycles.org website, email the County at recycling@montcopa.org or give them a call at 610-278-3618.

Nelson & Campbell Auto Tags

Quality Customer Service Since 1992

Full-Service Tag Agency

- Instant Registration • Instant Drivers License Renewals
- Instant Vehicle Title Transfers • Leave With Your Documents

www.NelsonAndCampbellAutoTags.com

215-542-9501

909 Bethlehem Pike Penn Dot
Spring House, PA 19477 Authorized On-Line Agent State & Service
Across From Rich's Other Place Deli Complete Notary Services Fees Apply

Beautiful Rooms
begin at

Maro's



CARPETS • FLOORING • WINDOW TREATMENTS

27 East Butler Avenue • Ambler, PA 19002
215-646-8178 • 215-643-2760 (fax)
e-mail: maros@marosfloorcovering.com

HOURS:

Mon, Tues, Thurs: 9am-5pm
Wed: 9am-8pm • Fri: 9am-5pm
Sat: 10am-4pm

www.marosfloorcovering.com

Storm Water Management Information

Jim Dougherty, P.E., Gilmore & Associates

Ambler Borough's website has a page dedicated to stormwater management (<http://boroughofambler.com/government/stormwater-management/>). This page contains a good deal of information regarding stormwater management that can be helpful to all residents, and business and property owners in the Borough. The page includes general stormwater management information, links to the Borough Stormwater Management Ordinance, as well as links to various reports concerning stormwater and other educational materials.

According to the Pennsylvania Department of Environmental Protection (PADEP) (<https://www.dep.pa.gov/Business/Water/CleanWater/StormwaterMgmt/Stormwater/Pages/default.aspx>), there are around 1,000 other municipalities in the state, that similar to Ambler, are required to obtain a permit under the National Pollutant Discharge Elimination System (NPDES). The main goal of the NPDES program is to clean up and keep clean the Country's many waterbodies. One of the aspects of the NPDES program is that the municipality provide educational materials to the public regarding water pollution.

It would be a massive and expensive undertaking for each municipality in the State to create and distribute its own educational materials. Luckily, there are numerous agencies and other groups that have prepared informational and educational materials that are free for use. Ambler has compiled some of this information and made it easily accessible on the Borough website.

Here are a few additional links from the Penn State Extension website that might be useful. "Stormwater Basics" (<https://extension.psu.edu/stormwater-basics>) includes videos & articles to answer common questions, such as:

- What is stormwater?
- What is the problem with stormwater and why should I care?
- What can I do about stormwater?
- Why does my community flood more than it used to?
- Is stormwater damaging my property?
- What are stormwater pollutants?
- What is an MS4?
- What is Sediment and Why is it a Stormwater Pollutant?
- Why Use a Rain Barrel?
- What's Allowed to go in a Storm Drain?
- How Do Trees Reduce Stormwater and Flooding?
- What are Permeable Surfaces?
- What are Riparian Buffers?

Since winter is around the corner, also from the Penn State Extension website, this article, "Melting Snow: It's Stormwater Too!" (<https://extension.psu.edu/melting-snow-its-stormwater-too>) might be helpful over the next few months. Please visit the Borough website to see what it has to offer. If you have any stormwater related information that you would like Ambler to share, please let us know.



SISTERS PAINTING

INTERIOR & EXTERIOR PAINTING

Free Estimates • Insured
Power Washing • Deck Staining • Great Prep

215-817-6913

sisters2paint@aol.com
www.sisterspainting.com

Bobbi Ann Helmich

GERMANTOWN
ACADEMY

**Summer
Camps**

SEE YOU NEXT SUMMER!

www.gacamp.org

Ambler, PA Family Owned & Operated

GARRY

CLEANING SERVICES

COMMERCIAL • RESIDENTIAL • JUNK REMOVAL

215-738-1543

www.mcgarrycleaning.com

JUNK
REMOVAL

- Residential Cleaning
- Office Cleaning
- Junk Removal

- Post Construction Cleanup
- Apartment Turnovers
- and much more

Insured & Bonded

Thank you

...to our wonderful Ambler Main Street members!

AmblerMainStreet.org

- Access Financial
- ACTII Playhouse
- Allflex Packaging Products
- Allison Wolf, Realtor, BHHS Fox & Roach Realtors
- Aloha Smoothie Company
- Amazing Decks
- Ambler Barbershop
- Ambler Beverage Exchange
- Ambler Extended Care Center
- Ambler Flower Shop
- Ambler Mennonite Church
- Ambler Musiccivic
- Ambler Savings Bank
- Ambler Sports Academy
- Ambler Station Singers
- Ambler Theater
- American Legion Post 769
- Antique Garden Cottage
- Art Center at Ambler
- Back to Earth Compost Crew
- Barberella Beauty
- Beyond the Jewel Box
- Breznicky Associates PC
- Cama Plan Self-Directed IRA LLC
- Cellini Studios and Gallery
- Chase Bank
- Ciaverelli Funeral Homes
- Communications Deployment Partners
- Connor Electric
- Costa Deli & Gina's Amazing Cupcakes
- D'Huy Engineers
- Darchei Noam
- Deck's Hardware
- DelVal Senior Advisors, Linda Kennedy - Independent Medicare Insurance Agent
- Dettera
- DiD Agency
- Edward Jones
- Fine Hill Realty Services
- First Presbyterian Church Ambler
- Forest & Main Brewing Company
- Geronimo's Peruvian cuisine
- Gravity Hair Salon
- Grisafi Music Institute of Ambler
- Holistic Apothecary LLC
- Home by Kristen
- Immersion Studio
- Invert Your World
- Jackets 'N Things
- Jeffrey C. Boyer State Farm
- John E Luskin and Son Plumbing and Heating
- Juice Pod Ambler
- Kanna Fitness
- La Provence LLC
- Lowe Investment Group LP
- Lutter Inc.
- Mahoney Event Center
- Main Street Vintage
- Manely For You Beauty Salon
- Mantis Computers
- Margaret's Hidden Treasures
- Maro's Floor Covering
- McHugh Engineering Associates Inc
- Mermaid Art Studio
- Minute Man Press
- Mirage Bodywork LLC
- Motto Marketing, LLC
- My Lifeguard Training Group, LLC
- Origin Photo
- Paper Dolls Ambler
- Phillips and Associates Architects
- Photos By Carlyn, LLC
- Pie and Plate Cafe
- Pike Health and Performance
- Pizza Box Ambler
- Plumb Pro Services
- Precis Engineering
- Premier College Prep
- Press Hair Bar
- Pure Spa
- Re:Love
- Retrofuture Café
- Rita's of Ambler
- Robert L Lowe Sr. Foundation
- Roost Home
- Saffron Indian Cuisine
- Salvatore A. Boccuti Aerial Photographer
- Security On-Line Systems, Inc.
- Serrao's State Farm Insurance
- Shaeff Myers Funeral Home
- Shine and Soar LLC
- Sisters Painting
- Small Talk
- Sorrentino Pasta + Provisions
- St. Anthony of Padua Parish
- Station Partners
- Swaddle Baby and Child
- Sweet Annie's Candy Shoppe
- Sweet Briar Café
- Tara Bevino/Vince Bevino Real Estate, LLC
- The 501 at Mattison Estate - SageLife Senior Living
- The Crossing at Ambler Station
- The Lab/Improv Ambler
- The Local Vape
- The Lucky Well
- Tony Laguda Formal Wear
- Urban Funeral Home
- Villari's Martial Arts Center of Ambler
- Viva Express
- Weavers Way Co-op
- Well Crafted Ambler
- Widow's Peak Distilling Company
- Wissahickon Valley Chimney Sweep
- Xtra 101

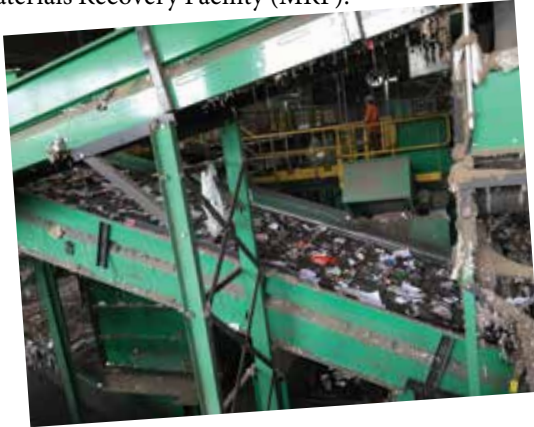




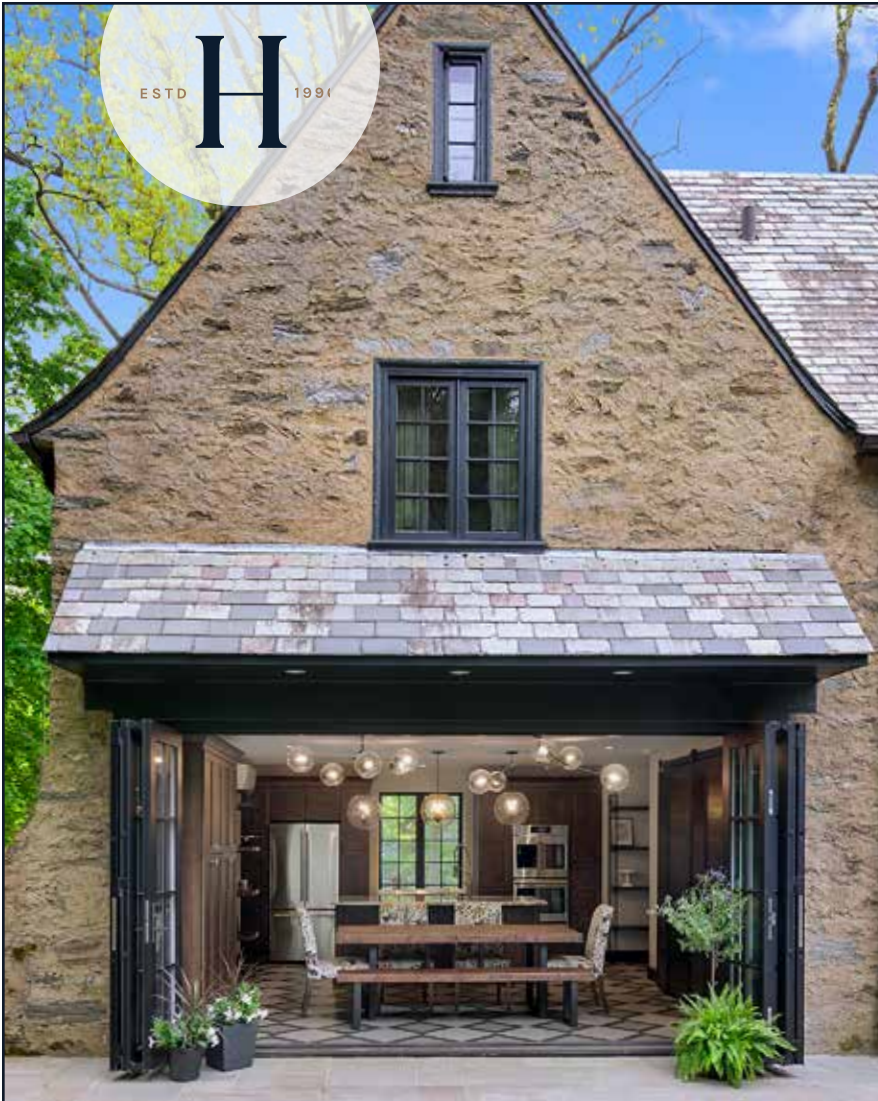
A Field Trip to Total Recycle, Inc.

You may wonder where Ambler Borough's recycling materials go after your roll carts are emptied each Wednesday. Members of the Northern Montgomery County Recycling Commission (NMCRC) were interested in learning about this, and so we visited **J.P. Mascaro's Total Recycle, Inc.** facility in Birdsboro, PA this past June for a scheduled tour of their state-of-the-art 75,000 sq. ft. single-stream Materials Recovery Facility (MRF).

After a brief introduction and PowerPoint display, we suited up and entered the work facility to see the equipment and staff in action as precise sorting and processing of single-stream recyclable materials (including flexible plastics) was underway.



*Photos at Total Recycle, Inc.
Birdsboro, PA*



Make Your Home Your Favorite Place

Harth Builders can improve the beauty and comfort of every room in your home — both inside and out.

HARTH

DESIGN | BUILD | REMODEL

HarthBuilders.com | 215.654.0364

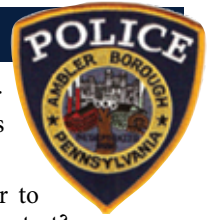
1021 N. Bethlehem Pike
Spring House, PA

PA #0249



Ambler Borough Police Department

Chief of Police Jeffrey Borkowski



School is back in session and students are stressed. We want our students to be safe and have a healthy school year. This means being there for them if they need our help. Mental health issues are widespread. If you notice something say something. If not to them to a person you trust.

Having a conversation about mental health may be uncomfortable, however, if you see the signs, it's a conversation you have to have.

Concerned about a friend? You might not be certain your friend is displaying worrisome signs regarding their mental health. Here are a few signs to look for as a guide:

- Impulsive behaviors or being more irritated than usual
- Not functioning like their usual selves (i.e., change in habits of how they dress, general appearance, eating or sleep habits)
- Talking about feelings of loneliness or despair
- Excessive worry
- Trouble concentrating
- Substance misuse

Notice the warning signs online. While you might hang out with your friends a lot, the reality is that you're not always physically with them. While texting, group chats, and DMs can be common forms of keeping in touch, they can cloud any evidence concerning body language or tone you would typically see hanging out in person. So how do you know if something is off?

Keep an eye out for these signs that could indicate your friend is struggling with their mental health:

- Posting captions, hashtags, or emojis that are overtly sad or negative- they go beyond sarcastic jokes.
- Liking posts or following accounts that promote negative behaviors- even if they aren't sharing it to their feeds.
- Writing posts or comments that show impulsive behavior, irritability, hostility, or indicate insomnia.

Whether it's on social media, in group chats, or during a hangout – if you suspect your friend is struggling, trust your gut.

Whatever gets you talking. Opening the door to begin a conversation can help. Not sure where to start? Try one of these opening lines to help make starting the conversation easier.

- “I've noticed you've been down lately what's going on”
- “Hey we haven't talked in a while, How are you”
- “You haven't been yourself lately, what's going on”
- “Are you okay? You haven't seemed yourself lately”
- “You haven't seemed yourself, I'm here if you want to talk”
- “No matter what you're going through, I've got your back”

After starting the conversation find time to talk. Beginning the conversation doesn't mean you have to dive straight into talking about mental health struggles or have an intense heart-to-heart. Consider instead meeting your friend where they are or extending an invitation to hang out. You can even talk about struggles you are going through to give your friend an avenue to open up. Whether it's over a bite to eat or taking a walk, a simple “what's up” is a great place to begin.

Trust your instinct – you probably know what your friend needs. Being a good friend doesn't require an instruction manual nor do you need to be a professional to know that they might need additional support. Don't worry about finding the perfect words to say – there is no right or wrong, just be there and let them know they have your support.

In a Crisis or know someone who is? You are not alone, and help is available 24/7. You can reach out to the Crisis Text Line by texting SEIZE to 741741 and call or text 988 Suicide & Crisis Lifeline at 988 (Press 1 for Veterans, Press 2 for Spanish). These resources are free, and everything you tell them is confidential unless it's essential to contract emergency services to keep you and your friend safe.

Credit Card & Debit Card Payments for Parking Tickets are Now Accepted

Parking tickets, street sweeping tickets, and other parking violations can now be paid online with a credit card or debit card. [Note: if you received a moving violation or other citation you will need to respond to the appropriate court as indicated on the ticket issued.]

You have three ways to pay your Ambler Borough Parking Ticket.

- **U.S. Mail** – Check or Money Order only. Include the ticket #, license plate # and date of violation on your check or money order. Do not mail cash.
- **In Person** – Cash, Checks, Money Orders or Credit Cards (Visa/MasterCard/Discover/American Express) and Debit Cards. Pay cash, checks, or money orders at the Borough Hall Lobby. All credit card or debit card payments are to be made at the Ambler Police Station located at Borough Hall, 131 Rosemary Avenue, Ambler PA 19002. A \$3 convenience fee will apply to all credit card & debit card payments.
- **Online** – Simply go to the **Borough website homepage** www.boroughofambler.com and click on the “Pay Your Parking Ticket” icon. Visa/MasterCard/Discover/American Express and Debit Cards are accepted. A \$3 convenience fee will apply to all credit card & debit card payments.

PRESCRIPTION & OVER-THE-COUNTER DRUG DISPOSAL

Ambler's Police Department Lobby is a convenient 24/7 drug disposal location. All drugs will be destroyed in a legal and environmentally friendly manner. Check out our Facebook page -- Ambler Borough Police Department -- for further details.

Community Ambulance Association of Ambler

Chas. Byram, Business Manager

Community Ambulance Association of Ambler (CAAA) will be running our Annual Fund Drive October, November, and December to cover Calendar year 2023! Mailings will go out in October, and payments received after that mailing will be applied to our "2022 Subscription Drive" that covers through 2023!



CAAA has been Ambler's 9-1-1 Ambulance service for 82 years and we look forward to serving the area for many years to come! We know prices are going up for everything and this year has been hard on so many of us. That's one reason we hope you will consider donating to our services today!

WHAT DO YOU GET? Hopefully you have insurance that covers 100% of your Emergency Ambulance bill, but most do not. If you are a subscriber, we bill your insurance company (and perhaps ask you to have them reprocess if they only paid a small amount to begin with) and secondary insurance and then we send the balance of the bill to you (your copay, coinsurance, deductible or what have you). When you are a subscriber to CAAA we write off ½ of that balance.

To be clear: we bill Insurance (Medicare Part B for example) and then write off ½ of the balance after Medicare Part B covers their portion. You get the benefit of reducing a bill for services, we get the benefit of a monetary donation! Win – Win!

WHAT DOES IT COST? It is only \$35 per Senior (65+) Individual or \$50 per Senior Couple. If you are single and under age 65, we charge \$50 and we also have a Family Membership for \$70 (only family at the same residence).

Unlike the big cities, we are not tax-based. We are so thankful for the Borough and Township donations we receive, but there is no steady income from taxes. If you have been in Ambler for any length of time, you know that we only respond to 9-1-1 calls. That means we can't guarantee a steady flow of insurance payments like non-emergency transport ambulances may have. As a matter of fact, we hope you don't see us every Monday – Wednesday – Friday (unless it's when a crew is getting food, or coffee...).

We know times have been hard. Thank you for considering a subscription (or a donation of any size). We won't receive the donation lightly. Please respond to the mailing you receive, and if you never got one feel free and send a note & check to: "Community Ambulance Association of Ambler", PO Box 119, Ambler, PA 19002-0119.

Council, Department and Committee News

Hello, Fellow Amblerites!

As I write this, the kids have just started back to school and we're finally welcoming a few cooler and rainy days. Over the spring and summer, Ambler celebrated Earth Fest, Cars, Pride, Juneteenth, Arts & Music, and Dogs. We also watched vegetables grow in our beautiful new community garden, kids grow at the Y's Knight Park Camp; and an apartment building grow in South Ambler to welcome new Amblerites.

Traditional Ambler celebrations will continue to blend with growth this fall. We're gearing up for Oktoberfest and Halloween celebrations, followed by the tree lighting, Santa by train, and Ambler's famous holiday parade. Also, this fall,

Borough Council will be busy working on growth by using the Planning Commission's recommendations for making some additions and improvements to our parks, hiring two new police officers, and expanding our water facilities to address PFAS in the groundwater supply.

Old and new. Tradition and growth. It all comes together here in Ambler!

As always, I look forward to hearing your thoughts and answering your questions.

~Glynnis Siskind, Ambler Borough Council, President
gsiskind@borough.ambler.pa.us
215-872-6119



 **DENNEY ELECTRIC SUPPLY** 
61 Butler Ave - AMBLER
Call Us - 215-628-8880

IN STOCK!
Automatic Standby Generators
and transfer switches.



SINGLE USE PLASTICS - Ambler is now the 11th Pennsylvania municipality to ban single use plastics (and one of the first to include polystyrene)! This process began 4 years ago but was put on hold by the state moratorium in 2019 and revisited in January 2022, beginning six months of public outreach and cooperative deliberation. The resulting single use plastics ordinance is aimed at encouraging consumers and commercial establishments within the Borough to help reduce the use and environmental impact of single-use plastics by promoting the use of reusable bags and substituting other biodegradable products for plastic and polystyrene food containers.

With the guidance of Faran Savitz of PennEnvironment, Nancy Roecker Coates of the Ambler EAC drafted a sample ordinance that Borough Council was then able to take and shape to incorporate the feedback of the many residents and business owners who attended our meetings and shared their thoughts. Look for more information and public outreach in the coming months as we move towards a phased implementation in March 2023. Please reach out with any specific questions to eendicott@borough.ambler.pa.us.

AMBLER COMMUNITY GARDEN

- The Ambler Community Garden held a Dedication and ribbon cutting in July. Representatives from Montgomery County were present to see the result of their "Montco 2040" grant that funded the construction of the beautiful garden, designed by Mike Bennett of Backyard Eats. Community members had been diligently watering the plants during the long hot summer and plans have already begin for spring 2023!



The garden has donated roughly 500 lbs. of produce to Mattie Dixon Community Cupboard, Weavers Way Community Fridge, and other area food banks.

Residents were also welcomed to harvest during regular open house hours on the weekends. A huge thank you to all of our volunteers and especially the steering committee for making this dream into a reality; Amy Sills, Erin Endicott, Jennifer Henderson, Karen DeVault Alkire, Mary Schuster, and Mike Bennett. To get involved this spring (green thumb not required) email AmblerGarden@gmail.com.

AMBLER PARK SYSTEM PLAN - After 3 years in development the Planning Commission has presented "Ambler Parks System Plan", the result of town halls, surveys, and lots of resident input! This plan is available on the borough website and will help target park improvements to best meet the needs of the community; top of the list includes picnic tables, improved accessibility, and potentially even a dog park!

Public Works Department News

Marco Resente, Public Works Superintendent

HOMEOWNERS - CALL 811 BEFORE YOU DIG !

Visit www.paonecall.org for more information about 811 and safe digging practices.

Pennsylvania One Call: The Keystone of Damage Prevention



Contact 811 prior to any digging project to have underground utility lines marked. Every few minutes an underground utility line is damaged because someone decided to dig without first contacting 811. Pennsylvania 811 encourages people to make a request 3 days before digging to avoid damaging buried utilities.

When calling 811, homeowners and contractors are connected to Pennsylvania One Call System, the local 811 center, which notifies the appropriate utility companies of their intent to dig. Professional locators then arrive at the digging site to mark the approximate locations of underground lines with flags, spray paint or both.

Striking a single line can cause injury, repair costs, inconvenient outages, and fines. Every digging project, no matter how large or small, warrants contacting 811 by phone or online. Installing a mailbox, building a deck, planting a tree, and laying a patio are just some examples of digging projects that require an 811 request at least three days before breaking ground.

The depth of utility lines can vary for a number of reasons, such as erosion, previous digging projects and uneven surfaces. Utility lines need to be properly marked because even when digging only a few inches or digging in a location that's previously been marked, the risk of striking an underground utility line still exists. Dig safely!

Public Works Department News *continued*

STREET SWEEPING – Street sweeping ends for the season the 1st week of December. Street sweeping will resume 1st week of April.

HOLIDAY TREE DISPOSAL - Holiday trees may be put out the 1st or 3rd Tuesday of January. Place trees curbside. Do not wrap trees in plastic tree bags -- our hauler will not pick up bagged trees.



PUBLIC WORKS CONTACT INFORMATION – Answering machine 215-628-9409. Contact the Borough Garage or the Borough receptionist to report a pothole, broken playground equipment or damaged signage.

TRAFFIC & STREET LIGHT OUTAGES – If a traffic or streetlight is out, please alert the Borough receptionist at 215-646-1000 or send an email to receptionist@borough.ambler.pa.us. For streetlight outages, please try to obtain and report the pole number. This will help us to more quickly relay the information to schedule a repair.

LABEL YOUR RECYCLING & TRASH ROLL CARTS – Please be aware that grey trash and blue recycle roll carts have gone missing. Residents are advised to put their house number on these carts. Please contact the Borough Receptionist if the wheels (and axles) on your roll carts need repair. Public Works will replace these parts at no cost to you. Please do not throw out the cart.

POTHoles OR OTHER DAMAGE – If you would like to report a pothole, broken playground equipment, or damaged Borough signage please call Public Works at 215-628-9409 and leave a message. Or, if you prefer, contact the Borough Receptionist at 215-646-1000 and she will relay your message to the Garage.

**MONOGRAM™
LIVE SHOWROOM**

**GERHARD'S
APPLIANCES**

SPRING HOUSE

**PHILADELPHIA'S
BEST of
STYLE
WINNER**

WWW.GERHARDSAPPLIANCE.COM

909 N. BETHLEHEM PIKE SPRING HOUSE, PA 19002

**75
YEARS
CELEBRATING**

The Ambler Borough Water Department would like to welcome our new residents and take a moment to answer our most frequently asked questions...

We bill quarterly for water, sewer, and trash on white post cards. These post cards tend to be overlooked as junk mail especially when they are mixed in with other pieces of mail, so please be on the lookout – bills are mailed out & due November, February, May & August. You may sign up to receive email notification that the Water Bill is being mailed out. Please visit www.boroughofambler.com and click on “Water Portal” on the homepage. On-line credit card & E-check payments are accepted for water bill payments. Please visit the Borough website homepage and click on “Pay Your Water Bill”. A convenience fee will be charged.

Please pay your Water Bill separately from other bills you may pay in the Borough, such as rental registration, tax bills or permit fees, so that your account is properly credited. For your convenience, the Water Payment Lock Box is located in the Borough Hall parking lot. You may access the lock box from the Poplar Street parking lot entrance.

Additionally, it has come to our attention that payments sent to the Ambler Water Department’s prior address of 122 East Butler Avenue, will no longer be forwarded by the Post Office. This has impacted several customers. Before you send in a check or use your bank’s bill pay option to send in your payments, please make sure they are being sent to the current address of 131 Rosemary Avenue, Ambler, PA 19002. We are sorry for any inconvenience this may have caused.

Finally, please keep your contact information with the Water Department current, simply by accessing the Swiftreach™ icon on the Borough website homepage. In the event of a water quality emergency, we need to get in touch with our customers!

As always if you have any questions or concerns, please contact the Ambler Water Dept. at 215-646-1000 extensions 110 (Brit) or 111 (Ruth).

LIHWAP May Be Able To Assist You With Overdue Water and Wastewater Bills



What is LIHWAP? The Low-Income Household Water Assistance Program (LIHWAP) is a temporary emergency program to help low-income families pay overdue water bills. LIHWAP is a grant – you do not have to repay it. You do not need to be on public assistance however, you must meet certain LIHWAP income guidelines. You need to have an unpaid water bill. You can either rent or own your home.

How does LIHWAP work? Grants may be available if you have an emergency situation and may lose your water service. You can receive one Crisis grant for your drinking water service and one for your wastewater service, up to \$2,500 each. LIHWAP will not award a grant for trash service charges that appears on your ‘water bill’. Crisis situations include past-due water bills, termination of water utility service, or having received notice that service will be shut-off within the next 60 days.

How to apply? Apply online at www.compass.state.pa.us or request an application by calling the Statewide Customer Service Center at 877-395-8930 or call PA Relay at 711 for the hearing impaired. Applications are available at your local County Assistance Office. You must work directly with LIHWAP and not the Ambler Borough Water Dept. LIHWAP will only contact Ambler Borough Water Department. once your application has been filed with LIHWAP so that they can verify your account’s status with us. If you need a duplicate copy of your water bill to present to LIHWAP, contact the Water Department at 215-646-1000 ext. 110.

Water Line Protection Program Application

What is the Water Line Protection Program? It is a lateral water line protection plan offered by Ambler Borough to our residential customers. Why do we offer this? Because the pipe that carries water from the curb to your house is on your property and the pipe is owned by you. If a leak or break in this line occurs (this is called the ‘lateral line’), it is your responsibility – and your expense -- to make the repair.

With the Water Line Protection Plan offered by the Borough of Ambler, if anything happens to your water service line from the point at which it crosses the outer vertical wall of the residence to the point at which it reaches the property boundary, we’ll take care of it.

This protection plan is offered to residential customers, specifically single-family dwelling & residential properties with four or fewer units on the same water meter with 5/8” to 1” water service lines. The cost is \$100 for a one-year protection plan and covers the cost to repair or replace allowing up to two repairs per year, \$3,500 per break maximum, capped at \$7,000 per year. Please be aware this Contract is held by you and not by the property. Therefore, *should you sell your property, the plan is not transferred to the new property owner.* Should you sell your property you may apply in writing for a pro-rated refund.

Name: _____

Water Service Address: _____

Mailing Address (if different): _____

Phone: _____ Email: _____ Check No. _____

Mail completed WLPP Application with check for \$100 payable to “Ambler Borough” to:
Ambler Borough ~ Attn: **Water Line Protection Plan**, 131 Rosemary Avenue, Ambler, PA 19002



2022-2023 AMBLER BOROUGH Trash & Recyclables Collection

November 2022						
Su	M	Tu	W	Th	F	Sa
		1	2	3	4	5
6	7	8	9	10	11	12
13	14	15	16	17	18	19
20	21	22	23	H	25	26
27	28	29	30			

December						
Su	M	Tu	W	Th	F	Sa
				1	2	3
4	5	6	7	8	9	10
11	12	13	14	15	16	17
18	19	20	21	22	23	24
H	26	27	28	29	30	31

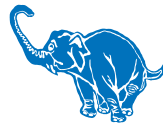
January 2023						
Su	M	Tu	W	Th	F	Sa
H	2	3	4	5	6	7
8	9	10	11	12	13	14
15	16	17	18	19	20	21
22	23	24	25	26	27	28
29	30	31				

February						
Su	M	Tu	W	Th	F	Sa
			1	2	3	4
5	6	7	8	9	10	11
12	13	14	15	16	17	18
19	20	21	22	23	24	25
26	27	28				

March						
Su	M	Tu	W	Th	F	Sa
			1	2	3	4
5	6	7	8	9	10	11
12	13	14	15	16	17	18
19	20	21	22	23	24	25
26	27	28	29	30	31	

April						
Su	M	Tu	W	Th	F	Sa
						1
2	3	4	5	6	7	8
9	10	11	12	13	14	15
16	17	18	19	20	21	22
23	24	25	26	27	28	29
30						

■ Trash ■ Recycle ■ Yard Waste ■ Holiday



J. P. Mascaro & Sons
If it's service, it's us!

1-800-432-1616

SOLID WASTE COLLECTION: All solid waste, recyclables and yard waste should be placed curbside no later than 6 A.M. the day of your scheduled pickup. Solid waste is to be placed in the gray roll cart provided by Ambler Borough. No hazardous or E-waste collected. Litter and debris can attract unwanted pests and can clog storm drains. Keep trash and recyclables covered. **DO NOT LITTER.**

RECYCLABLES COLLECTION:

Recyclables are to be placed in the blue roll cart provided by Ambler Borough. All recyclables can be mixed together and placed in this cart **NO SORTING NEEDED.** Recycle newspapers, inserts & junk mail, magazines, catalogs & envelopes, paper back books & phone books, cardboard & clean pizza boxes, office & school papers (colored paper), box board (cereal, cake & cracker boxes); waxed cartons (milk, juice & soup containers); paper egg cartons, paper bags, aluminum cans & clean foil; tin & empty steel aerosol cans, empty glass jars & bottles, and all plastic containers labeled #1-#7. Clean and Rinse please.

PUT FLEXIBLE PLASTICS IN YOUR CURBSIDE RECYCLING CART.

Flexible plastic packaging can now be placed in your recycling carts. Flexible packaging is any plastic packaging that is able to flex or wrap such as plastic pouches, wraps, and bags. For example: Grocery Bags, Retail Bags, Pet Treat Pouches, Detergent Pouches, Case Wrap, Shrink Film, Food Storage Bags, Snack Food Pouches, Salad Bags, Wipes Pouches, Candy Pouches, Baby Food Pouches, Bread Bags, Diaper Wrap Packaging (No Diapers New or Used), Air Pillows, Bubble Wrap, Pet Food Bags, Cereal Bags, Paper Towel Overwrap, Chip Bags, Meat Bags, Cheese Bags and Drink Pouches. Additional information regarding curbside collection of flexible plastics can be found at www.jpascaro.com

DO NOT PUT THE FOLLOWING ITEMS IN CART: NO Mirrors, NO food waste, NO polystyrene cups/plates, NO motor oil/hazardous chemical containers, NO plastic toys or sporting goods, NO electronics or batteries, NO compact discs/DVDs, NO foam egg cartons or ice cream containers, NO light bulbs, hangers or yard waste.

BULK COLLECTION: One bulk item (mattress, desk, etc.) per household is permitted per week. **No Tires, No TVs or Computers.** Call J.P. Mascaro & Sons at **1-800-432-1616** for "white" item pickup.

For items containing Freon (refrigerators, etc) visit Montgomery County's website www.montcoparecycycles.org or 610-278-3618 for a list of companies that will remove Freon and dispose of the appliance for a fee. At no cost to you, call PECO Smart Ideas (888-573-2672) for collection of working frigs & freezers (10-30 cuft). Residents must be on site at time of scheduled pickup.

Mattresses and box springs must be bagged and sealed in plastic mattress bags when placed curbside. Items may be set out on your regularly scheduled bulk service day. All mattresses and box springs must now be **wrapped in plastic** before collection. Recent infestations of bed bugs have spread from mattresses to employees as they make curbside pickups. You can find mattress disposal bags at most major retailers and home improvement stores, such as Home Depot, Lowe's, Walmart, Amazon.com, etc.

YARD WASTE COLLECTION: Yard waste shall be placed in paper bags or unlined trash cans or may be bundled with twine. No plastic bags. Yard waste includes leaves, branches and branch materials, twig material, vine and hedge trimmings. No grass clippings. Residents may also bring yard waste to Barnside Farm Compost Facility, 991 Haldeman Rd, Schwenksville, contact at 610-287-8880.

HAZARDOUS WASTE & ELECTRONIC WASTE COLLECTION

Refer to Montgomery County's website, www.montcoparecycycles.org for a list of hazardous waste collection sites and other recycling news.

Refer to Ambler Borough's website www.boroughofambler.com for e-waste collection opportunities when they are posted.

CONSTRUCTION CORNER – Did you know that if you put up a swimming pool on your property that has more than 24 inches of water, a permit is required? Do you need a permit to replace your boiler? What about putting up a new fence?

Home ownership in Ambler Borough comes with responsibilities that many residents may not be aware of. Every day the Borough Code Department fields numerous calls with questions from residents and contractors with these exact questions.

As a general rule, any structural alterations, or additions you may be considering for your home or property, require a permit. Receiving a permit will enable the Borough officials to review your proposed work for building code and Borough ordinance compliance.

The following is a list of the more common types of work that requires a permit:

- Fences
- Sheds
- Swimming Pools
- Concrete Work
- Siding

- Roofs
- Window Replacement
- Kitchen Remodel
- Plumbing Changes
- Electrical Changes
- Sewer Work
- Fuel Oil Tanks
- Chimneys, Fireplaces
- Basement Renovations

Keep in mind that this list is not all inclusive. If you have questions about work not listed here or any other code-related questions, please contact the Code Department for more information at 215-646-1000 ext. 112.



NOTES FROM THE TAX COLLECTOR

Jennifer Stomsky, Tax Collector

I hope that everyone had a good summer, and I wish you happy holidays to come!

At this point in the year the deadline for the discount on your Wissahickon School District real estate tax bill has passed, and we are in the face period. The deadline for paying this is October 31. I do accept postmarks, however, I cannot accept face value after the deadline, so if you are mailing your bills, please consider doing so at least a week before the deadline. After October 31, there will be a 10% penalty added to the face value of your bill.

For anyone who has not yet paid the County/Borough real estate tax bill, that is in the penalty period.

For the remainder of this year, my office hours for in-person payments are Tuesdays from 10am-1:30pm. My office is located at 262 N. Spring Garden St (between Mount Pleasant and Rieffs Mill Roads). For special needs accommodations, call me at 215-367-5663 or email me (the quickest way to get a hold of me) at amblerborotaxcollector@gmail.com and I will be happy to work with you to set up a time/place that works for you. However, **please note that I cannot always accommodate last minute requests, so please plan accordingly.**

Other methods of paying include mail (P.O. Box 3087, Ambler, PA 19002), lockbox located on the porch of 262 N. Spring Garden St., online using a credit card or e-check, or on the phone using a credit card. Please note that credit card payments include a 2.65% fee and e-checks have a flat \$1.50 fee. The link to the online system is available on the Borough website, boroughfambl.com. If you pay online, a receipt will be emailed to you. If you want a receipt when paying by mail or lockbox, please include a self-addressed stamped envelope and BOTH copies of the bill.

Please note that I am closed on weekends, evenings, and holidays.

This includes primary and election days. If you call or email on these days/times, there will be a delay in me responding to you.

Many people like to pay their taxes using their bank's online bill payment. Please be careful when doing this as the payments are not automatic. It can take 3 to 5 days for me to receive your payment and, if you are close to the end of discount or face, you risk the payment being late and missing the deadline, which will result in you owing more.

Please make sure that your checks are made payable to Jennifer Stomsky, Tax Collector or Ambler Borough Tax Collector. Please DO NOT make your checks payable to Ambler Borough. They will need to be returned. Also, please be sure that your parcel number and/or address are identified on your payments so that I can properly apply them, and please also include your phone number so that I can quickly and easily contact you if there are any issues. If you require a receipt, please enclose both halves of the bill and a SASE with your payment and one will be sent back to you.

As we come to the end of the year, please remember that any bills not paid in full by December 31st will be delinquent and subject to additional penalties. Personal checks WILL NOT be accepted after December 15th. From December 15 to 31 payments must be made by certified check, money order, cash (exactly amount only), credit card (online or by phone), or online by e-check.

If you are on Facebook, please follow my page, Ambler Borough Tax Collector Jennifer Stomsky for news, updates, changes in my office hours, or general information. I can also be found on Twitter at [@AmblerBoroTC](https://twitter.com/AmblerBoroTC).

Please always feel free to reach out to me directly with any questions or concerns.

IN OUR COMMUNITY

WISSAHICKON VALLEY PUBLIC LIBRARY – Ambler Branch

www.wvpl.org

209 Race Street, Ambler PA 19002

Anne Hall, Branch Manager

215-646-1072

LIBRARY HOURS OF OPERATION:

MONDAY TO THURSDAY 10 AM to 8 PM • FRIDAY AND SATURDAY 10 AM TO 5 PM

LIBRARY SERVICES

- Browse and borrow books, audiobooks, eBooks, movies, magazines, and museum passes
- Use public computers and access free WiFi
- Study, read, and relax in our common areas
- Reserve our new spacious community room for your group! Contact librarian Anne Hall to reserve space!



Adult Programs:

- Ambler Book Group – 2nd Thursday each month at 2:30pm.
- Beginner ESL Classes. Wednesdays at 10AM. Contact esl@wvpl.org to register.
- ESL Let's Talk Conversation Group. Tuesday mornings at 10:30am online. For intermediate and advanced students. Contact esl@wvpl.org to register.
- Yarn Café – Friday mornings at 10:30am. All fiber crafters welcome!
- Yoga Classes - Monday evenings at 6:30pm and Thursday mornings at 10am. Drop-in sessions, \$10 suggested donation.

Children's Programs

- Pajama Storytimes the first Thursday of every month at 6pm.
- Storytime, sing-a-long, and craft for ages 2-4 Mondays at 10:30.
- Babytime sing-a-long and free play ages 0-24 months Tuesdays at 10:30
- Reading to the Dogs - 3rd Saturday of every month at 11am



The **Ambler Borough Gym** is now a regular community site for American Red Cross Blood Drives. A blood drive is scheduled on **Thursday, December 29th from 2-7 p.m.** To make an appointment to give go online to www.redcrossblood.org (keyword: **ambler**) or call **1-800-Red-Cross**. Walk-ins are welcome.



American Red Cross

Voter Information – www.montcopa.org/voterservices

AMBLER WARD 1	-	WISSAHICKON FIRE COMPANY, 245 Race St.
AMBLER WARD 2	-	AMBLER BOROUGH HALL (GYM), 131 Rosemary Ave.
AMBLER WARD 3	-	CALVARY METHODIST CHURCH, 16 E. Park Ave.

For further voter information contact Montgomery County Voter Services at 610-278-3280

IN OUR COMMUNITY

Family Promise Montco PA (formerly Inter-Faith)

31 S. Spring Garden Street, Ambler, PA 19002

215-628-2334

www.fpmontco.org

Helping Families Overcome Homelessness

Family Promise Montco PA (formerly Inter-Faith) provides opportunities for families in our diverse community to achieve self-sufficiency by offering community-based programs designed to bridge homelessness and independence. How to help? Please call or visit our website to donate, host a drive or become a volunteer.

Mattie N. Dixon Community Cupboard

150 N. Main Street, PO Box 367, Ambler, PA 19002

215-628-3002

www.community-cupboard.org

Neighbors Helping Neighbors

The Cupboard offers food, clothing, employment assistance/job help/resume building, medical referrals, housing referrals and emergency financial assistance. The Cupboard is a 501 C(3) non-profit food pantry operating for over 40 years. To volunteer, donate or if in need, please contact us.

Senior Adult Activities Center (SAAC)

45 Forest Avenue, Ambler, PA 19002

215-619-8863

www.montcosaac.com

Live Full. Live Well. Live Long.

Ambler SAAC involves, enriches & empowers adults aged 50+ years to live as independently as possible through recreational, educational & social opportunities. Activities emphasize creating and maintaining independence in all phases of life. Contact SAAC for membership, Meals on Wheels, special events & programs.



Your Neighbor, Your Realtor

Tara Bevino



TARA BEVINO

Tarabevhomes@gmail.com

484.375.3825

Tara Bevino

Office 215.646.3333

308 Rosemary Avenue
Ambler, PA 19002



The Borough of Ambler would like to thank the businesses that appear in this newsletter and to recognize them each as supporters and cornerstones of our community. For it is with their contributions that this newsletter has been produced at no charge to our residents.

An advertisement for Junk Squad, featuring a QR code, the company logo with a paw print, and contact information. The text includes 'FAMILY OWNED & OPERATED', '215-402-7098', 'WWW.MYJUNKSQUAD.COM', 'FULLY INSURED', and 'FULL SERVICE JUNK REMOVAL'. Logos for Discover, Visa, and BBB are also present.

Prepare Your Home for Winter

As winter approaches, our thoughts turn to other activities as we plan for the annual hibernation to the indoors. This is also a good time to plan a safe hibernation for your house as well. The constant change in the weather can have a significant effect on your house that, if left unchecked, may result in major repairs in the future.

Now is the time to inspect your house for anything that does not appear to be normal. Things to look for include loose siding, missing or torn shingles, broken or sticking doors, missing caulking around windows or any other item that will leave your home exposed to the elements. Now is the time to start addressing these items before the cold weather sets in and these items are forgotten.

You may also want to take a look at other items that are often overlooked until it is too late. One important item is your home heating system. Most people who are not on a maintenance program forget to have service performed until well into the heating season when the furnace decides to stop working. Unfortunately, this is the time that most heating contractors are busiest and you may have to wait for service. Avoid the headache and plan ahead.

Items such as your water heater may need your attention as well as other home appliances. Remember to check and make sure water pipes are properly insulated and not exposed to freezing temperatures. Be sure that leaves and debris do not obstruct water flow from gutters and downspouts. Water that freezes and is allowed to back up rooftops often provides you with unwelcome leaks. The lists are endless, but remember your home is a major investment - take good care of it.



Banking for Business

Services that are good for your company's growth.

- ✓ Lending solutions for a range of needs
- ✓ Products to maximize cash flow
- ✓ Trusted local advisor as your partner

Get started today!

[AmblerSavingsBank.com](https://www.AmblerSavingsBank.com)

215.646.8400

Member
FDIC



**AMBLER
SAVINGS
BANK**
Founded 1874



SCAN ME

Scan the QR code to visit our website.



AMBLER BOROUGH HALL

131 Rosemary Avenue, Ambler, PA 19002

215-646-1000

Fax: Administration 215-641-1355 Fax: Water 215-641-1921

Monday – Friday 8:00 am – 4:00 pm (closed Federal holidays)

Website: www.boroughofambler.com

Mayor Jeanne Sorg jsorg@borough.ambler.pa.us
Borough Manager Mary Aversa manager@borough.ambler.pa.us
Council President Glynnis Siskind gsiskind@borough.ambler.pa.us

AMBLER BOROUGH COUNCIL 2022

WARD 1	WARD 2	WARD 3
Erin McKenna Endicott Karen Sheedy Amy Hughes	Glynnis Siskind, President Jennifer Henderson Lisa Auerbach	Haley Welch, Vice President Frank DeRuosi Nellie Agnes Forst

AMBLER COUNCIL COMMITTEES 2022

Finance & Planning:	Ms. Forst (Chair), Mr. DeRuosi, Ms. Sheedy, Ms. Auerbach
Parks & Recreation:	Ms. Endicott (Chair), Ms. Henderson, Ms. Welch, Ms. Auerbach
Public Safety:	Ms. Henderson (Chair), Ms. Endicott, Ms. Forst, Ms. Hughes
Public Utilities:	Ms. Welch (Chair), Ms. Endicott, Ms. Sheedy, Ms. Hughes
Salary & Personnel:	Mr. DeRuosi (Chair), Ms. Forst, Ms. Henderson, Ms. Welch

STATE/CONGRESSIONAL CONTACT INFORMATION 2022

Rep. Madeleine Dean (4th Cong. Dist): PH: 215-884-4300 WEB: dean.house.gov
Sen. Maria Collett (12th PA Sen. Dist): PH: 215-368-1429 WEB: www.senatorcollett.com
Hon. Mary Jo Daley (148th PA Assembly): PH: 610-832-1679 WEB: www.pahouse.com/mdaley

PUBLIC MEETING SCHEDULE – Ambler Borough Hall

[Meeting schedules and meeting agendas are posted on the Borough website]

1st Tuesday	Borough Committee –7:00 pm
1st Thursday	Zoning Hearing Board (call for specific dates/times)
3rd Tuesday	Borough Council Meeting – 7:00 pm
3rd Wednesday	Environmental Advisory Council (EAC) – 7:00 pm
3rd Thursday	Ambler Junior Baseball – 7:00 pm
4th Tuesday	Planning Commission – 7:00 pm
Last Tuesday	Ambler Main Street – 5:30 pm
As Advertised	Civil Service Commission (call for specific dates/times)
As Advertised	Human Relations Commission (call for specific dates/times)

EMERGENCY NUMBERS – Police, Fire, Rescue, Ambulance 9 – 1 – 1

NON-EMERGENCY & STAFF PHONE NUMBERS

Ambler Police (Chief Jeffrey Borkowski) 215-646-1000 (8:00-4:00pm) **Ambler Police** 215-643-6444 after hours
Wissahickon Fire Co. 215-646-1266 **Fire Marshall** Rick Lockhart 215-646-1000 ext 122
Community Ambulance Association of Ambler 215-643-4111
Water Department Superintendent Steve Smallberger 215-646-1000 ext 124 [ssmallberger@borough.ambler.pa.us]
Water Billing – 215-646-1000 (Brit ext 110 or Ruth ext 111) **Water Emergency** – 215-646-1000 **follow prompts**
Waste Water Treatment Plant Superintendent Patrick Sarro Sr. 215-628-9457 [Awwtpsupt@borough.ambler.pa.us]
Code Enforcement Officer Glenn Kucher 215-646-1000 ext 112 [code@borough.ambler.pa.us]
Public Works Superintendent Marco Resente 215-628-9409 (leave message or call 215-646-1000 '0' Receptionist)
Finance Manager Albert Yaghooty 215-646-1000 ext 107 [ayaghooty@borough.ambler.pa.us]
Borough Receptionist Melissa Reale 215-646-1000 dial "0"

PROUD
to be
YOUR
HOMETOWN
UNIVERSITY



97%

of recent graduates were
employed or in graduate
school within 6 months

(among survey respondents, November 2021)



Gwynedd Mercy University

gmercyu.edu

Core Values: RESPECT, INTEGRITY, SERVICE, SOCIAL JUSTICE

St. Anthony of Padua Parish

Where Heart Speaks to Heart

Weekend Mass Schedule

Saturday Vigil 5:15 PM

Sunday 8:15 & 10:30 AM

Reconciliation

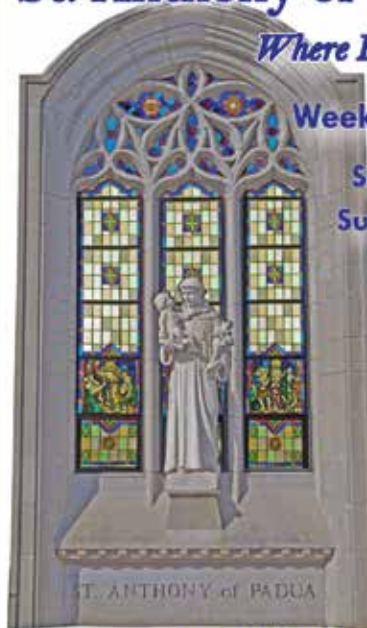
Saturday 4 - 5 PM

*Our church is open
everyday and
all are welcome.*

259 Forest Ave.

Ambler, PA 19002

215 - 646 - 4742



www.saintanthonyparish.org

JOHN E. LUSKIN
& SON
PLUMBING & HEATING

Water Heaters • Sump Pumps • Boilers
Water Treatment & Purification

Third Generation Family Owned!



WINNER!



WINNER

281 East Butler Avenue • Ambler, PA
Office: 215-643-1188 • Fax: 215-643-0758

LuskinPlumbing.com

Sewer & Drain Cleaning
Video Pipeline Inspection
High Pressure Water Jetting
Water & Sewer Line Repair/Replacement

Dramatic Transformations Just Around the Corner

A Full Service Practice Specializing in Dental Implants, Dentures, Crowns



Call To
Schedule Your
Complimentary
New Patient
Evaluation.



Pi Dental Center

Dr. Glenn Wolfinger Dr. Robert Slauch (Board-Certified Prosthodontists)

467 Pennsylvania Ave, # 201 • Fort Washington PA

215-646-6334 • pidentalcenter.com

BOROUGH OF AMBLER

131 Rosemary Avenue
Ambler, PA 19002

Prsrtd Std
U.S. Postage
PAID
Harrisburg, PA
Permit NO. 609



Fall/Winter 2022-23



THIS COMMUNITY NEWSLETTER IS PRODUCED FOR BOROUGH OF AMBLER BY
HOMETOWN PRESS • 215.257.1500 • ALL RIGHTS RESERVED®

To Place An Ad Call Rosemary At Hometown Press • 215-805-2121

SINCE

1950



• STEAKS • MILKSHAKES •
• HOAGIES • ITALIAN MARKET •

Call for Your Hoagie Tray Today!



Visit our Website and
Online Menu!



215-646-6173

901 E. Butler Pike • Ambler PA
(Corner of Bethlehem Pk and Butler)

Located in Ambler since 1983. Serving our customers since 1875.

Thank you for the privilege of continuing
to serve your Ambler, Pennsylvania home
comfort needs during these trying times.



Heating, Air Conditioning, Plumbing & Oil Delivery

WALTER A. DWYER, INC.

152 S. MAIN ST • (215) 248-4300 • DWYEROIL.COM