

Borough of

AMBLER

HOMETOWN NEWS

www.boroughofambler.com



AMBLER

Arts & Music Festival
June 14-15, 2019

DOG DAYS & other Ambler Main Street events inside...

Christine Raines

ALLISON WOLF

Hard working, Ambler-focused Realtor with a proven track record.
Committed to our community, Ambler resident and volunteer.

Featured in Philadelphia Magazine as a Five Star Real Estate Agent for 9 years in a row (2010-2018). BHHS Fox & Roach Chairman's Circle Platinum Award Winner.

215-704-9888 (direct & best number)
215-542-2200 (office)
allison.wolf@foxroach.com
www.MyAmblerHome.com
721 Skippack Pike, Blue Bell, PA 19422



BERKSHIRE HATHAWAY
HomeServices

Fox & Roach, REALTORS®



Ambler19002
The Allison Wolf Team



GROWLER Fills Available!

Ambler Beverage Exchange

Singles and 6 Packs Now Available!

Largest Cold Case Beer Selection in the Area!

Huge Variety of Specialty, Imported & Domestic Beer Available in Cases & Kegs!
(non-alcoholic beverages, snacks and more...)

267-470-4854

www.amblerbeverage.com

259 E. Butler Ave. • Ambler, PA 19002



You can custom order your pre-owned car close to wholesale!

Zacone Motors, Inc.

Foreign Car Repair

175 ROSEMARY AVENUE • AMBLER, PA 19002

Serving the Public in the Ambler Community since 1983

Pre-Owned BMW, Mercedes, Audi, Lexus, Infiniti, Acura

Wholesale/Retail • Foreign-Domestic Repairs • State Inspection

SALES AND SERVICE • 215.643.6520

www.zaconemotor.com



Artisans 3 Gallery

Creatively Curated Jewelry, Clothing & Gifts



**Eclectic Clothing
Hand Made Jewelry
Fantastic Gifts**

Present Ad for:
10% off one full priced item

903 N. Bethlehem Pike Spring House
215-643-4504
ArtisansThreeGallery.com
instagram @a3gshop

Shaeff-Myers Funeral Home



Robert E. Myers, Supervisor

Richard E. Myers, F.D.

145 Tennis Avenue, Ambler, PA

215-646-0595

Ambler Main Street Spring and Summer Events



MAY

- 3 - First Friday
- 4 - Farmers' Market Opens
- 11 - Farmers' Market
- 18 - Ambler Auto Show
- 18 - Farmers' Market
- 25 - Farmers' Market

JULY

- 6- Farmers' Market
- 13- Farmers' Market
- 20- Farmers' Market
- 27- Farmers' Market
- Restaurant Week

SEPTEMBER

- 6 - First Friday
- 7 - Farmers' Market
- 14 - Farmers' Market
- 15 - 21 - Home Week
- 21 - Farmers' Market
- 28 - Farmers' Market

JUNE

- 1 - Farmers' Market
- 7 - First Friday
- 8 - Farmers' Market
- 14 & 15 - Ambler Fest
- 15 - Farmers' Market
- 22 - Farmers' Market
- 29 - Farmers' Market

AUGUST

- 2 - First Friday
- 3 - Dog Days of Summer
- 3 - Ambler Bike Night
- 3 - Farmers' Market
- 10 - Farmers' Market
- 17 - Farmers' Market
- 24 - Farmers' Market
- 31 - Farmers' Market

OCTOBER

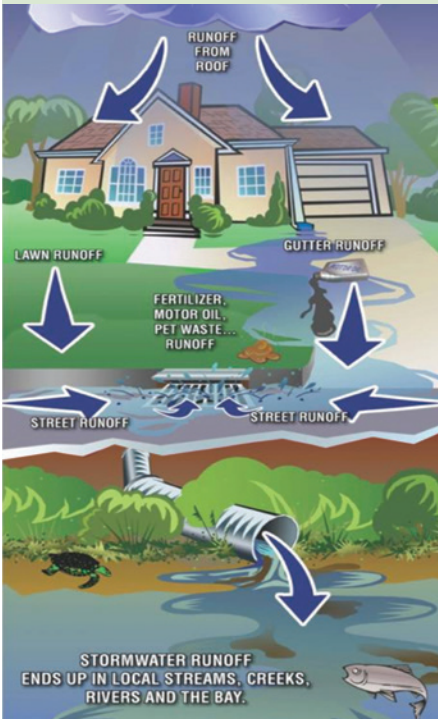
- 4 - First Friday
- 5 - Oktoberfest
- 5 - Farmers' Market
- 12 - Farmers' Market
- 19 - Farmers' Market
- 26 - Farmers' Market



www.AmblerMainStreet.org

Storm Water Management

Jim Dougherty, P.E., Gilmore & Associates



As we prepare for the upcoming Spring and Summer Seasons, it is important to be mindful of our outdoor maintenance activities and how they impact the environment, especially those that affect the quality of our waterways. We can limit negative impacts by making a few simple and easy changes.

Here are some suggestions:

1. Use low nitrogen and phosphorus fertilizers in lawn and garden areas, and use these sparingly. This will reduce the amount of nutrients carried away by stormwater.
2. Keep leaves, yard waste and other debris out of the gutters and off lawns. These get carried away by rain, decay in streams and impact water quality and wildlife. Gutter guards in your downspouts are preferred and leaf/grass clipping removal from the street is encouraged to help the Borough.
3. Clean up after your pet year round during walks, as well as in your own back yard, as animal waste contributes to stormwater contamination.
4. Consider planting native trees and shrubs on your property, they are best suited for our climate, conserve water and require less fertilizer/pesticide applications. Many are available at local garden centers. Spring is the perfect time for planting; the cool weather gives new plants a chance to establish their root system before the extreme heat of the summer.
5. When draining water left in pools over the winter be sure to pump the water into the sanitary system as discharge into the storm system could release harmful chemicals that go untreated into local streams, disrupting ecosystems during spawning season.

Notes from the Environmental Advisory Council

Mary-Margaret Monser, Chairperson

A well placed rain garden reduces runoff and flooding, and filters pollutants carried in stormwater. Along with municipal benefits and the conservation of a valuable natural resource, rain gardens create excellent habitat for birds and butterflies.

As surrounding communities expand (replacing trees and open space) the increase of impervious surfaces becomes more problematic. The solid surfaces that make up our towns create a rush of water during rain storms, known as ‘stormwater runoff.’ The massive volume of stormwater runoff from roofs, parking lots and roads increases flooding and carries pollutants from streets, parking lots and lawns into our creeks. This leads to costly municipal improvements in stormwater treatment structures. With larger or more frequent storms the problem is worsening. Large stormwater flows carry debris, clogging storm sewer exits and contributing to flooding. Lawn pesticides, fertilizers, road salts, and pet waste wash off with the rain water causing pollutants to enter our creeks.



A rain garden is a personal contribution to clean water in your community.

An individual rain garden may seem like a small thing, but collectively they produce substantial neighborhood and community environmental benefits. Rain gardens improve water quality – they can reduce the amount of pollution reaching creeks and streams by up to 30% and they can help with flooding by percolating water.

You can help to **Grow Ambler Greener** through **Clean Streams, Clean Water**, Ambler’s stormwater program. Attend a workshop, sign up for an assessment and we’ll determine how your property can contribute to reducing stormwater runoff. Homeowner subsidies available: \$1280 towards a rain garden or \$2,000 towards permeable pavers.

Visit www.growingamblergreener.com to learn more and sign up for a workshop.

Studio visits available by appointment at
59 Belmont Ave. Ambler PA.

Residential and commercial commissions now being accepted.

Contact Karen at
215-654-0106.

Spotted Lanternfly: What to Look For

Spotted Lanternfly, *Lycorma delicatula*, is a new threat to Pennsylvania and the United States, and experts are still learning how to combat it. This new invasive insect has spread throughout southeastern Pennsylvania since its discovery in Berks County in 2014. Native to parts of Asia, spotted lanternfly has spread to a multicounty area and sightings have been reported in some neighboring states.

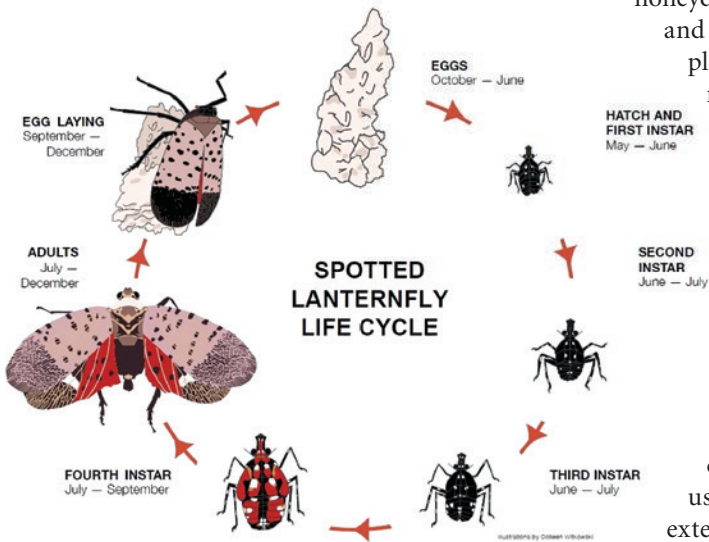
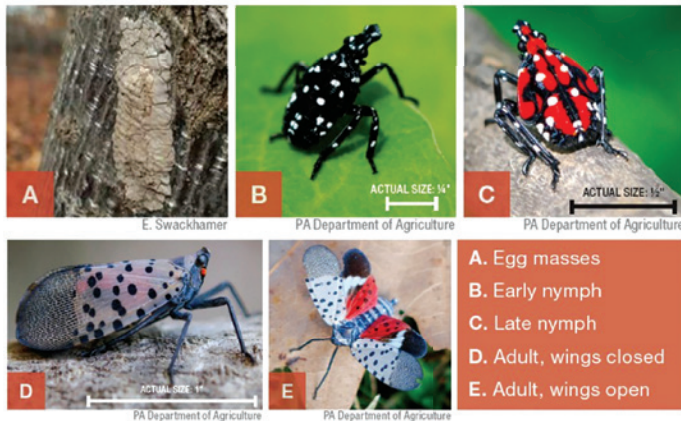
The spotted lanternfly (SLF) attacks fruit trees, but not the fruit itself. It uses its piercing-sucking mouthparts to feed on the sap in trunks, branches, twigs and leaves. These oozing wounds will leave a greyish or black trail along the bark of the plant.

As it digests the sap, the insect excretes a substance known as

honeydew that, along with sap from these weeping wounds, can attract bees and other insects. There may be a buildup of this sticky fluid on infested plants and on the ground below. The honeydew and sap also provide a medium for growth of fungi, such as sooty mold, which can cover leaf surfaces and stunt growth. Plants with heavy infestations may not survive.

Potentially at stake are Pennsylvania's grape, tree-fruit, hardwood, nursery and landscape industries, which generate agricultural crops and forest products worth nearly \$18 billion annually. The insect also can cause damage to high-value ornamentals in home landscapes and can affect quality of life for residents.

To slow or stop the spread, the Pennsylvania Department of Agriculture imposed a quarantine regulating the movement of plants, plant-based materials and outdoor household items out of the quarantine area. If you find spotted lanternfly, you may take action by using the resources listed on the Penn State Extension website at <https://extension.psu.edu/spotted-lanternfly>



Hazardous Waste & Tire Collection Events - 2019

Montgomery County has released information for Household Hazardous Waste Collection and Tire Collection. For a complete list of collection locations and further details, please visit www.MontcoPARecycles.org or call their recycling line at 610-278-3618 - or visit Ambler Borough's Trash/ Recycling & Yard Waste quick link on our website www.boroughofambler.com. Convenient drop-off locations include:

Household Hazardous Waste

Sat., May 18 (9 a.m. – 3 p.m. rain or shine)
Temple University – Ambler Campus
1431 E Butler Ave., Ambler – entrance

Residential Tire Collection

Sat., June 8 (9 a.m. – Noon rain or shine)
Montgomery County Community College
1313 Morris Road, Blue Bell – entrance

Electronics Disposal Ban - The County will not hold E-Waste collection events this year. The Covered Device Recycling Act (CDRA) of 2010 prohibits the disposal of E-Waste as trash. Trash haulers may not pick up TVs or computers curbside. There are several options for recycling computers, monitors and TVs and CRT monitors. Check out the County website www.MontcoPARecycles.org for a complete list of drop locations (for a fee) and further details. You may call the County recycling line at 610-278-3618.



Ambler, PA Family Owned & Operated

MCGARRY
CLEANING SERVICES
COMMERCIAL • RESIDENTIAL • JUNK REMOVAL

215-738-1543
www.mcgarrycleaning.com

- Residential Cleaning
- Office Cleaning
- Junk Removal
- Post Construction Cleanup
- Apartment Turnovers
- and much more

Insured & Bonded

True Value.

DECK'S HARDWARE
Serving the community since 1908

- Hardware
- Tools
- Paints
- Plumbing and Electrical Supplies

(215) 646-0201
FAX: (215) 646-3606
deckshardware27@verizon.net

27 North Main Street
Ambler, PA 19002-5797
ww3.truevalue.com/decks

Thank you

...to our wonderful Ambler Main Street members!

AmblerMainStreet.org

- Access Financial
- ACTII Playhouse
- Addicted to Dance
- Allergy Technologies LLC
- Allflex Packaging Products
- Allison Wolf, Realtor
- Ambler Beverage Exchange
- Ambler BH Development Partners, LP
- Ambler Extended Care Center
- Ambler Flower Shop
- Ambler Mennonite Church
- Ambler Nail Lounge
- Ambler Pediatrics
- Ambler Physical Therapy
- Ambler Savings Bank
- Ambler Sports Academy
- Ambler Theater
- Ambler Tire Co.
- Ambler Whippain Youth Football Association
- Antique Garden Cottage
- Anton B Urban Funeral Home
- Arielle Bridal
- ATARAXIS Brazilian Jiu Jitsu & Self Defense
- Barberella salon
- Bridget's Steakhouse
- Bussinger Trains
- Calvary United Methodist Church
- CamaPlan Self Directed IRA LLC
- Catanzaro Insurance
- Cellini Studios and Art Gallery
- Chuck's Garage Inc
- Ciavarelli Family Funeral Homes and Crematory
- Communication Deployment Partners
- Costa Deli & Gina's Amazing cupcakes
- Crunchi
- D'Agostino Carpets
- D'Huy Engineering Inc
- Deck's Hardware
- Denney Electric Supply
- Dettera
- DiD Agency, LLC
- DiFrancesco Opticians
- Fireside Bar and Grill
- First Presbyterian Church of Ambler
- Forest & Main Brewing Company
- From the Boot
- Gravity Hair Salon
- GT Automotive & GT Radiator Repairs
- Gypsy Blu
- Immersion Studio
- Interfaith Housing Alliance
- Jackets and Things
- Jade Organic Salon
- Janice Trusky.com
- Jeffrey C. Boyer State Farm Agent
- John E. Luskin & Son Plumbing & Heating
- KC's Alley
- Laguda Formal Wear
- Launch or Land LLC
- LCK Training
- Liz-El Jewel Box
- LTK Engineerig Services
- Lutter Inc.
- Main Street Vintage
- Manely For You Beauty Salon
- Mantis Computers
- Maro's Inc
- McHugh Engineering
- Minute Man Press
- Montco SAAC
- Motto Marketing
- Mulhern and Kulp Structural Eng. Inc.
- No Bare Walls Framing Studio
- Organized Efficiency
- Origin Photo
- Paw'ing Around Pet Services
- Phillips and Associates
- Pie and Plate Café
- Plumb Pro Services
- PMC Mechanical
- Prive Salon by Kathryn Picraux
- Pure Spa
- Re:Love
- Roost Home
- Saffron
- Salvatore A Boccuti, Ariel Photographer
- Security Online Systems
- Shaeff Myers Funeral Home, Inc.
- Sisters Painting
- State Farm Insurance Tony Serrao
- Sugarpeel
- Sweet Briar Café
- Tannery Run Brewing Company
- The Art Collective at Ambler
- The Beauty Institute
- The Lucky Well
- The Local Vape Ambler
- Tommy D's Ambler
- United Tire of Ambler
- VIDA & COMIDA LLC
- Villari Marshal Arts Center of Ambler
- Wake Coffee
- Weaver's Way Food Coop
- Wild Lilies Jewelry
- Wissahickon School District
- Wissahickon Valley Public Library
- Xtra 101
- Young Starrs Theater Company



Recycling News – Recycling the Correct Materials

Recycling is Required. Municipal and state regulations require that residents, commercial establishments and non-residential establishments recycle all recyclable materials. Commonly recycled materials include:

- **Paper** – newspaper, office/copy paper, glossy & color paper, cardboard, junk mail, phone books, cereal/cracker boxes
- **Plastic** – bottles and jugs No. 1-7
- **Glass** – clear, green and brown containers
- **Metal** – aluminum, steel, tin, and bimetal cans and containers

Contaminated Recycle Materials. Contaminated recycling materials cannot be recycled and usually end up going to a landfill. Uncleaned containers with leftover food wastes cannot be recycled. Containers contaminated with food wastes will be sent to a landfill. You need to wash food containers and remove all of the food before placing the containers into your recycle bin.

Most Common Contaminants

Keep these common contaminants OUT of your recycling bin!



NO Recyclables in Plastic Bags

Empty loose recyclables in bin but leave the plastic bags out.



NO Food & Liquids

Compost instead! Otherwise, it belongs in the trash.



NO Electronics & Small Appliances

Donate if in good condition or schedule a bulky item pickup.



NO Textiles, Rugs, Carpet, & Bedding.

Large quantities may require special disposal.



NO Tires, Auto Parts & Scrap Metal

Can damage equipment & are safety hazards. Contact local scrap recyclers or retail tire stores.



NO Construction & Wood Debris

Can damage equipment & are safety hazards. You may be able to schedule a bulky pickup or throw it in the trash.



NO Hoses, Holiday Lights, Hangers & Extension Cords

They wrap around equipment and can shut down entire facility!



NO Plastic bags, Film & Flexible Film Packaging

Take plastic bags back to local grocer to keep bags clean and dry.



NO Paper Napkins, Plates, Tissues & Cups

Compost if possible and remember to recycle the cardboard tube.



NO Polystyrene Foam

Foam and plastic to-go containers are not recyclable.



NO Yard Waste & Wood

Compost or put in your yard waste cart, if available. Otherwise, it belongs in the trash.



NO Non-Recyclable Plastic

Not everything that is plastic is recyclable! Recycle only food and beverage bottles, jugs and tubs.

Facts About Plastics Pollution

www.nationalgeographic.com/environment

Versatile, pliable, durable, cheap to produce—and used globally. Plastic is all of that. It is also both a life-saving miracle product and the scourge of the Earth. Here are several essential facts to keep in mind.

- Some 18 billion pounds of plastic waste flows into the oceans every year from coastal regions. That's the equivalent of five grocery bags of plastic trash sitting on every foot of coastline around the world.
- Forty percent of plastic produced is packaging, used just once and then discarded.
- The average annual plastic bag usage for shoppers in the U.S. is almost one bag per resident per day. In Denmark, shoppers use an average of four plastic bags a year.
- Nearly half of all plastic ever manufactured has been made since 2000. Half of the world's plastics are made in Asia. The lion's share of that – 29 percent – is made in China, home to 18

percent of the world's population.

- Less than one-fifth of all plastic is recycled globally. Plastic recycling rates are highest in Europe at 30 percent. China's rate is 25 percent. The United States recycles just 9 percent of its plastic trash.
- Nearly a million plastic beverage bottles are sold every minute around the world. In 2015, Americans purchased about 346 bottles per person -- 111 billion plastic beverage bottles in all.
- About 8 percent of the world's oil production is used to make plastic and power the manufacturing of it. That figure is projected to rise to 20 percent by 2050.
- And those single-use plastic straws -- In just the U.S. alone, one estimate suggests 500 million straws are used every single day. One study published earlier this year estimated as many as 8.3 billion plastic straws pollute the world's beaches.

COUNCIL, DEPARTMENT & COMMITTEE NEWS

Dear Friends of Ambler Borough,

I would like to take this opportunity to update everyone on some key issues Council will be addressing in the coming year. As we see the increased effects of climate change on our community and on our world, Council has begun to explore ways to reduce our carbon footprint through more sustainable best management practices. We have turned our attention to ways to incorporate solar power on some or all of our municipal buildings. We are looking at our fleet of vehicles to determine which can be transitioned to hybrid, or zero emission vehicles. We have adopted a resolution to encourage residents and business to reduce the use of plastics in the borough.

2019 will also bring changes to our infrastructure. We will begin to replace borough owned sidewalks. Maintenance work will be made to the Hendricks Street bridge to ensure its continued safety. The Cavalier parking lot will get a facelift, and the renovations to the public restrooms in the Borough Hall Community Center will be completed.

Ambler continues to flourish and grow, remaining a destination community in Montgomery County. Whether you are enjoying its thriving business district, meandering through its multiple parks, or simply taking in the historic homes that dot our streets, Ambler remains a jewel. Ambler has bloomed, and 2019 will continue that trend.

Borough Council remains dedicated to our constituents, and to working together to keep Ambler moving forward.

Sincerely,

Frank DeRuosi, President, Ambler Borough Council, fderuosi@borough.amblerpa.us

PARKS & RECREATION ACTIVITIES

Council Vice President Sara Hertz, Chair

Your Parks & Recreation Committee is busy organizing family activities during the summer, including family-friendly movies, yoga and mindfulness classes. Check the Borough website for updates. **FAMILY MOVIE NIGHTS** are set for **Friday, June 28 – LEGO MOVIE 2** – at Pickering Field (at dusk); **Friday, July 19 – STAR WARS: THE LAST JEDI** – at Ricciardi Park (at dusk); and a **Peoples' Choice Movie** (voted on at the June 28th showing) on **Friday, August 23** at Knight Park.

Friends of Ambler Parks has launched groups for Wahl Playground and Ricciardi Park. Volunteers are meeting to consider what enhancement projects they would like to take on for each park. By summertime, new all-weather bulletin boards will be installed in all of our parks to help share information about Borough happenings.

PUBLIC WORKS DEPARTMENT NEWS

Marco Resente, Public Works Supervisor



ASH TREE TREATMENTS FOR EMERALD ASH BORER –

Two years ago we told you about Ash Trees and Emerald Ash Borer (EAB) Infestations. The Borough hired an arborist who identified our ash trees and noted the EAB infestation on public property and in all Borough parks. A number of ash trees were removed and the remaining trees were treated and put on a long-term treatment schedule. The ash trees receive trunk injections every other year. As such, this spring & summer, the surviving ash trees are scheduled for treatment.

BULK WASTE DISPOSAL – NEW MATTRESS DISPOSAL REQUIREMENT - The Borough's contracted hauler, J.P. Mascaro, has notified us that effective immediately mattresses and box springs **must be wrapped with plastic and sealed closed** before being placed curbside for pickup. This is to protect their employees while handling mattresses and box springs. Mattress-sized plastic bags may be purchased at Deck's Hardware in the Borough or at your nearby Lowes, Walmart and Home Depot stores or on Amazon.

STREET SWEEPING RESUMES THIS SPRING – Street sweeping resumes for the season during the 1st week of April. Streets will be

swept on a weekly basis. Head the street signs. "No Parking" on specified days & hours will be enforced. Tickets are \$12.

TRAFFIC & STREET LIGHT OUTAGES – If a traffic or street light is out, please notify the Borough receptionist at 215-646-1000 or send an email to receptionist@borough.ambler.pa.us. For street light outages, please try to obtain and report the pole number. This will help us to more quickly relay the information to schedule a repair.

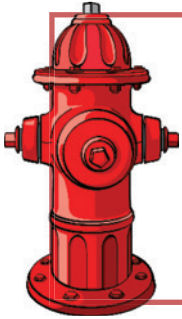
POTHoles OR OTHER DAMAGE – If you would like to report a pothole, broken playground equipment or damaged Borough signage please call Public Works at 215-628-9404 and leave a message on the machine. Or, if you prefer, contact the Borough Receptionist and she will relay your message to the Garage.

LABEL YOUR RECYCLE & TRASH ROLL CARTS – Please be aware that grey trash and blue recycle roll carts have gone missing. Residents are advised to put their home number on these carts. Please contact the Borough Receptionist if the wheels (and axles) on your rollcarts are in need of repair. Public Works will replace these parts at no cost to you. Please do not throw out the cart.

SUMMER JOBS WITH THE BOROUGH'S PUBLIC WORKS DEPT.

Attention College Students

Ambler Borough's Public Works Department seeks college students interested in summer employment. We offer flexible start & end dates. Please stop by Borough Hall to complete an Employment Application or download an application from the Borough website www.boroughofambler.com. Drop off or mail your application to Ambler Borough, Attn: Summer Employment, 131 Rosemary Ave., Ambler, PA 19002



SYSTEM HYDRANT FLUSHING

Ambler Water Dept. will begin routine system hydrant flushing this spring. Flushing will occur Sunday evenings through Fridays. Water Dept. will post a flushing schedule on the Borough website— check back often. If you experience discolored water, DO NOT OPEN THE HOT WATER SIDE OF YOUR FAUCET – this will bring discolored water into the hot water tank. RUN COLD WATER only from your faucet for several minutes. Continue repeating this process until the water runs clear. If discoloration is severe, it also is suggested, if you have a water softener, that you by-pass the water softener until the situation is ‘clear.’ If the problem persists, contact the Water Department at 215-646-1000 Ext. 110 or 111 M-F between 8:00 a.m. & 4:30 p.m.

- The Water Payment Lock Box is located in the Borough Hall parking lot. You may access the lock box from the Poplar Street parking lot entrance.
- You may sign up to receive email notification that the Water Bill is being mailed out. Please visit www.boroughofambler.com and click on “Water Portal” on the homepage.
- On-line credit card & E-check payments are accepted for water bill payments. Please visit www.boroughofambler.com and click on “Pay Your Water Bill” on the homepage. A convenience fee will be charged.
- Please pay your Water Bill separately from other bills you may pay in the Borough, such as rental registration, tax bills or permit fees, so that your account is properly credited. Water Bills are mailed out quarterly.
- Please keep your contact information with the Water Department current, simply by accessing the Swiftreach™ icon on the Borough website homepage. In the event of a water quality emergency, we need to get in touch with our customers!
- Every year the Water Department publishes an Annual Drinking Water Quality Report which is designed to inform customers about the quality of water we deliver to you each day. The report is sent out to our water customers every June and will also be available on the Borough website.

WATER LINE PROTECTION PLAN APPLICATION



What is the Water Line Protection Program? It is a lateral water line protection plan offered by Ambler Borough to our residential customers. Why do we offer this? Because the pipe that carries water from the curb to your house is on your property and the pipe is owned by you. If a leak or break in this line occurs (this is called the ‘lateral line’), it is your responsibility – and your expense -- to make the repair.

With the Water Line Protection Plan offered by the Borough of Ambler, if anything happens to your water service line from the point at which it crosses the outer vertical wall of the residence to the point at which it reaches the property boundary, we’ll take care of it.

This protection plan is offered to residential customers, specifically single family dwelling & residential properties with four or fewer units on the same water meter with 5/8” to 1” water service lines. The cost is \$100 for a one year protection plan and covers the cost to repair or replace allowing up to two repairs per year, \$3,500 per break maximum, capped at \$7,000 per year. Please be aware this Contract is held by you and not by the property. Therefore, *should you sell your property, the plan is not transferred to the new property owner.* Should you sell your property you may apply in writing for a pro-rated refund.

Name: _____

Water Service Address: _____

Mailing Address (if different): _____

Phone: _____ Email: _____ Check No. _____

Mail completed WLPP Application with check for \$100 payable to “Ambler Borough” to:
 Ambler Borough ~ Attn: **Water Line Protection Plan**, 131 Rosemary Avenue, Ambler, PA 19002

Local Banking Made Easy.

**AMBLER
SAVINGS
BANK**

Founded 1874

www.AmblerSavingsBank.com

Member
FDIC

155 E Butler Avenue | Ambler | 215-646-8400



WHAT IS THE ZONING HEARING BOARD? The Borough of Ambler's Zoning Hearing Board is a quasi-judicial body, consisting of three regular members and three alternate members, all of whom are residents of the Borough who serve for staggered terms of three years. These dedicated volunteers with various backgrounds and insight are tasked with holding hearings and making decisions on various zoning related items. The Borough of Ambler's Zoning Hearing Board considers whether to grant relief from Borough zoning ordinances regulating the use of land, when an applicant wishes to make use of a parcel in a certain way, that by a strict reading of the zoning ordinance, is not permitted. The board also decides whether certain criteria have been met to allow certain types of special exceptions to be made to zoning ordinances. The board also considers appeals from rulings made by the code officer in enforcing zoning-related ordinances. Hearing notices are advertised in the paper along with posted on the Borough website. In addition, the applicant must provide the hearing notice to any property owner within 300 feet of the parcel related to the application. The Zoning Hearing Board meetings are application based and held in the Ambler Borough Meeting Hall, typically the first Thursday of each month at 7:00 p.m. when needed. Special meetings and date changes will be announced and advertised as scheduled. Look forward to seeing you at the next Zoning Hearing Board meeting.

PROPERTY OWNER TIPS FOR MAINTAINING AMBLER'S BEAUTY, WALKABILITY, AND CHARM - Walkability is one of the many cornerstones which makes Ambler a desirable place to live, work, and play. Sidewalks exist on the majority of all streets within the Borough and those connections are a vital part to the Borough's pedestrian-oriented small-town environment. Walkable communities such as Ambler lead to both economic and natural benefits, more social interactions, and encourage physical fitness. Maintaining these resources is a community wide effort. Property owners should be mindful and take notice of the following:

- Inspect your sidewalks to make sure that any tripping hazards such as broken or raised sidewalks are repaired or replaced to avoid any possible injuries to pedestrians
- Maintain any plants, flowers, or trees along sidewalk edges so that they do not hang low or inhibit pedestrians passing by
- Cut or trim areas along curb lines where weeds or grass maybe become overgrown. This area maintenance is the responsibility of property owners
- Shovel the snow off all sidewalks as soon as possible to avoid possible fines or pedestrian injuries. In addition, if there is a fire hydrant on your property be sure to clear a 3ft radius around the hydrant and a clear path to the street.

Property owners are encouraged to work with their neighbors to maintain sidewalks throughout the Borough. If you see any of the above violations feel free to contact the Ambler Borough Code Department to investigate. Working together we can all do our part to provide and maintain safe, clean, attractive, and walkable neighborhoods.

FIREWORKS - LEAVE IT TO THE PROFESSIONALS

As Fourth of July celebrations approach, residents are reminded of the following Pennsylvania restrictions for fireworks. Fireworks, and/or sparklers can cause fires, burns, dismemberment or death if handled improperly. Pennsylvania residents are permitted to purchase and use consumer grade fireworks that contain a maximum of 50 milligrams of explosive material. M-80's, cherry bombs, quarter sticks and any other explosive or incendiary devices with more than 50 milligrams of explosive materials are **strictly prohibited**. Furthermore, the use and discharge of all display fireworks, including sparklers, is prohibited on all Borough property and parks.

FIREWORKS USE AND RESTRICTIONS

- Fireworks cannot be ignited or discharged on a public or private property without express permission of the property owner.
- Fireworks cannot be discharged from or within a motor vehicle or building.
- Fireworks cannot be discharged toward a motor vehicle or building.
- Fireworks cannot be discharged within 150 feet of an occupied structure.
- Fireworks cannot be discharged while the person is under the influence of alcohol, a controlled substance, or another drug.



Ultimately, handling fireworks should be left to the professionals! Restrictions on fireworks are for a good cause. No matter how small or large fireworks may be, they are a potential fire starter. It is still possible to celebrate and enjoy the holiday. Families can consult the newspaper or local activity calendar and attend one of several approved, licensed fireworks displays. If you see someone setting off fireworks please contact the Borough Police.

NELSON & CAMPBELL AUTO TAGS

Quality Customer Service Since 1992

Full-Service Tag Agency

- Instant Registration • Instant Drivers License Renewals
- Instant Vehicle Title Transfers • Leave With Your Documents

www.NelsonAndCampbellAutoTags.com

215-542-9501

909 Bethlehem Pike Spring House, PA 19477 Across From Rich's Other Place Deli	Penn Dot Authorized On-Line Agent Complete Notary Services	State & Service Fees Apply
---	--	-------------------------------

Beautiful Rooms
begin at Maro's

CARPETS • FLOORING • WINDOW TREATMENTS

27 East Butler Avenue • Ambler, PA 19002
215-646-8178 • 215-643-2760 (fax)
e-mail: maros@marosfloorcovering.com

HOURS:

Mon, Tues, Thurs: 9am-5pm
Wed: 9am-8pm • Fri: 9am-5pm
Sat: 10am-4pm

www.marosfloorcovering.com

NOTES FROM THE TAX COLLECTOR

Jennifer Stomsky, Tax Collector

I'd like to start by thanking people for their patience with me as I worked out my first-year kinks. We got through it! I know that change isn't always easy, but I hope that I was helpful and accommodating to those that needed it.

Next, I'd like to just remind you of some dates to remember:

The County and Borough tax bills are mailed on March 1st.

- The discount (2%) period is from March 1st until April 30th.
- The face value period is from May 1st until June 30th.
- Bills paid after June 30th (until December 31st) will include a 10% penalty.

The School tax bill is mailed on July 1st.

- The discount (2%) period is from July 1st until August 31st.
- The face value period is from September 1st until October 31st.
- Bills paid after June 30th (until December 31st) will include a 10% penalty.
 - If you would like to pay your school bill using the three coupons that accompany it, you must pay the first coupon on or before July 31st. If you choose this option, please remember to pay the next two coupons on September 15th and October 31st, or you will be subject to a 10% penalty. Also, please keep in mind that you do not get the 2% discount with this option

Interim taxes are collected all year. These are extra taxes assessed when you make renovations to your home.

My office hours for in-person payments are Tuesdays from 9am-1pm. My office is located at 262 N. Spring Garden St (between Mount Pleasant and Rieffs Mill Roads). For other times or special

needs accommodations, please call me at 215-367-5663 or email me at amblerborotaxcollector@gmail.com and I will be happy to set up a time and place that works for you. Please note that I am closed on weekends, evenings, and holidays. This includes primary and election days.



Other methods of paying include mail (P.O. Box 3087, Ambler, PA 19002), lockbox located on the porch of 262 N. Spring Garden St., online using a credit card or e-check, or in person using a credit card. Please note that credit card payments include a 2.65% fee and e-checks have a flat \$1.50 fee. The link to the online system is available on the Borough website, boroughofambler.com. If you pay online, a receipt will be emailed to you. If you want a receipt when paying by mail or lockbox, please include a self-addressed stamped envelope and BOTH copies of the bill.

Many people like to pay their taxes using their bank's online bill payment. Please be careful when doing this as the payments are not automatic. It can take 3 to 5 days for me to receive your payment, and if you are close to the end of discount or face you risk the payment being late and missing the deadline, which will result in you owing more.

If you are on Facebook, please follow my page, Ambler Borough Tax Collector Jennifer Stomsky for news, updates, changes in my office hours, or general information. I can also be found on Twitter at @AmblerBoroTC.

Please always feel free to reach out to me directly with any questions or concerns.

IN OUR COMMUNITY

continued on page 14

PLANT AMBLER VOLUNTEERS RECOGNIZED



Plant Ambler volunteers donate their time and energy planting and maintaining flowers and greenery throughout the business district.

Last growing season Hilary Heckman and the Plant Ambler volunteers were recognized for the organization's 45 years of hard work towards the beautification of Ambler Borough.

Plant Ambler volunteers are always willing to share their enthusiasm about gardening with "green" newcomers. If you would like to join Plant Ambler and volunteers to plant, water and/or weed, or to send a donation, please contact **Plant Ambler** at 215-219-6553.

Mayor Sorg reads a Resolution Recognizing Plant Ambler Volunteers at a Borough Council meeting

AMBLER SYMPHONY

www.amblersymphony.org

Spring will feature the final subscription concert of the year which will be held May 17 (7:30 p.m.) at the Wissahickon High School Auditorium, located behind the school off Dager Road. This concert will feature popular pieces such as the William Tell Overture, and Liszt's Hungarian Rhapsody No.2, along with Broadway and movie favorites. Violinist Anastasia Mazurok will make a guest appearance.

Spring will also feature an outdoor performance of the season's favorites at Hope Lodge, Fort Washington, on Wednesday June 5 (Rain Date June 12) at 7 p.m. Concertgoers are encouraged to bring families and a picnic. For details on this and other concerts, please go to our website at www.amblersymphony.org.

RED CROSS BLOOD DRIVE is scheduled for Monday, June 3rd (2 – 7 p.m.) at Ambler Borough Hall in the gymnasium. You may make an appointment to give by going online to www.redcrossblood.org and entering the sponsor keyword: ambler or by calling 1-800-Red-Cross.



**American
Red Cross**



2019 AMBLER BOROUGH Trash & Recyclables Collection

May 2019						
Su	M	Tu	W	Th	F	Sa
			1	2	3	4
5	6	7	8	9	10	11
12	13	14	15	16	17	18
19	20	21	22	23	24	25
26	H	28	29	30	31	

June						
Su	M	Tu	W	Th	F	Sa
						1
2	3	4	5	6	7	8
9	10	11	12	13	14	15
16	17	18	19	20	21	22
23	24	25	26	27	28	29
30						

July						
Su	M	Tu	W	Th	F	Sa
	1	2	3	H	5	6
7	8	9	10	11	12	13
14	15	16	17	18	19	20
21	22	23	24	25	26	27
28	29	30	31			

August						
Su	M	Tu	W	Th	F	Sa
				1	2	3
4	5	6	7	8	9	10
11	12	13	14	15	16	17
18	19	20	21	22	23	24
25	26	27	28	29	30	31

September						
Su	M	Tu	W	Th	F	Sa
1	H	3	4	5	6	7
8	9	10	11	12	13	14
15	16	17	18	19	20	21
22	23	24	25	26	27	28
29	30					

October						
Su	M	Tu	W	Th	F	Sa
		1	2	3	4	5
6	7	8	9	10	11	12
13	14	15	16	17	18	19
20	21	22	23	24	25	26
27	28	29	30	31		

November						
Su	M	Tu	W	Th	F	Sa
					1	2
3	4	5	6	7	8	9
10	11	12	13	14	15	16
17	18	19	20	21	22	23
24	25	26	27	H	29	30

December						
Su	M	Tu	W	Th	F	Sa
1	2	3	4	5	6	7
8	9	10	11	12	13	14
15	16	17	18	19	20	21
22	23	24	H	26	27	28
29	30	31				

■ Trash
 ■ Recycle
 ■ Yard Waste
 ■ Holiday



J. P. Mascaro & Sons
If it's service, it's us!

1-800-432-1616

REFUSE & SOLID WASTE COLLECTION: All solid waste, recyclables & yard waste should be placed curb side no later than 6 A.M. the day of your scheduled pickup. Refuse/solid waste is to be placed in the grey roll cart provided by the Borough. No hazardous or E-waste collected. Litter and debris can attract unwanted pests. Also, litter and debris can clog storm drains. Keep trash and recyclables covered. **DO NOT LITTER.**

RECYCLABLES C COLLECTION: Recyclables are to be placed in the blue roll cart provided by the Borough. All recyclables can be mixed together and placed in this cart **NO SORTING NEEDED.** Recycle newspapers, inserts & junk mail, magazines, catalogs & envelopes, paper back books & phone books, cardboard & clean pizza boxes, office & school papers (colored paper), box board (cereal, cake & cracker boxes); waxed cartons (milk, juice & soup containers); paper egg cartons, paper bags, aluminum cans & clean foil; tin & empty steel aerosol cans, empty glass jars & bottles, and all plastic containers labeled #1-#7.

DO NOT PUT THE FOLLOWING ITEMS IN THIS CART: NO garbage, NO plastic bags, NO Mirrors, NO food waste, NO polystyrene cups or plates, NO motor oil or hazardous chemical containers, NO plastic toys or sporting goods, NO electronics or batteries, NO compact discs or DVDs, NO foam egg cartons or ice cream containers, NO light bulbs, hangers or yard waste.

BULK COLLECTION: One bulk item (mattress, desk, etc.) per household is permitted per week. **No Tires, No TVs or Computers.** Call J.P. Mascaro & Sons at 1-800-432-1616 for "white" item pickup.

For items containing Freon (refrigerators, etc) visit Montgomery County's website www.montcoparecycles.org or 610-278-3618 for a list of companies that will remove Freon and dispose of the appliance for a fee. At no cost to you, call PECO Smart Ideas (1-888-573-2672) for collection of working frigs & freezers (10-30 cuft). Please note, resident must be on site at time of scheduled pickup. **Mattresses and box springs must be bagged and sealed in plastic mattress bags when placed curbside. Items may be set out on your regularly scheduled bulk service day. All mattresses and box springs must now be wrapped in plastic before collection. Recent infestations of bed bugs have spread from mattresses to employees as they make curbside pickups. You can find mattress disposal bags at most major retailers and home improvement stores, such as Home Depot, Lowe's, Walmart, Amazon.com, etc.**

YARD WASTE COLLECTION: Yard waste shall be placed in paper bags or unlined trash cans or may be bundled with twine. No plastic bags. Yard waste includes leaves, branches & branch materials, twig material, vine & hedge trimmings. No grass clippings. Residents may also bring yard waste to Barnside Farm Compost Facility, 991 Halde-man Rd, Schwenksville, contact at 610-287-8880.

HAZARDOUS WASTE & ELECTRONIC WASTE COLLECTION: Please refer to Montgomery County's website, www.montcoparecycles.org for a list of hazardous waste collection sites and other recycling news.

Refer to Ambler Borough's website www.boroughofambler.com for e-waste collection opportunities when they are posted.

YMCA KNIGHT PARK SUMMER DAY CAMP - 'WHERE SUMMER HAPPENS'



Every summer, the Ambler Area YMCA, working with the Borough of Ambler, offers children residing within Ambler Borough a safe and positive place to spend their summer days -- **Knight Park Summer Day Camp**. This year, camp will run **June 17th – July 26th**. Camp fee is \$45 per week per child. Drop off and pick up is at the Ambler Borough Hall Gym Entrance, 131 Rosemary Avenue. Camp hours run from 8:30 a.m. until 4:00 p.m. Monday - Friday. (No extended Camp Care).

Day campers walk to Knight Park each morning, weather permitting, for structured activities. Energetic, creative, and well trained staff encourage youth participation in a wide variety of activities including sports, arts & crafts, science, gardening, character development, and cooperative play. Campers are given the opportunity for weekly field trips, special events, a voucher for a free swim lesson session in either the summer or early fall, and a family swim pass for the Ambler Area Y Indoor Pool on Fridays. This will also be the third year the YMCA has partnered with the Wissahickon Valley Watershed providing campers with the opportunity for Nature Activities and Exploration. Ratio is 1:10. For more information contact Christie Dunning 215-628-9950 x1573 or Nate Ranck at Nathan.ranck@philaymca.org or go to www.philaymca.org.

Camp Registration: May 1st (5-7 p.m.)

Ambler Borough Hall
131 Rosemary Avenue

or register at the Ambler Area YMCA starting May 2nd

Proof of Ambler Borough residency is required at registration

HARTH
Design • Build • Remodel

MAKE YOUR HOME YOUR FAVORITE PLACE

Make your home your favorite place to be with a renovation by the award-winning, design-build remodeling team at Harth Builders.

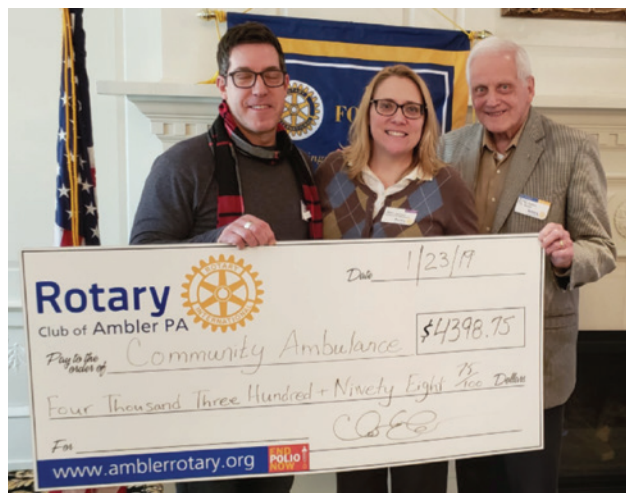
PA #0249

1021 N. Bethlehem Pike | Spring House, PA | PA #0249 | HarthBuilders.com | (215) 654-0364

COMMUNITY AMBULANCE ASSOCIATION OF AMBLER (CAAA)

Community Ambulance Association of Ambler is grateful for continued support from the community, including a \$4,398.75 grant from Ambler Rotary to fund modems used to transmit real time EKG readings to the hospital, improving patient care. In 2018, CAAA responded to more than 4,100 calls for help, and the support of our community helps provide the equipment, training and staff crucial to this life-saving care. Thank you!

CAAA has a full spring schedule including a second Designer Bag Bingo fundraiser on Saturday, April 27, 2019. New to our schedule this year is a family friendly and FREE EMS Week Celebration on Sunday, May 19 from 10 am – 2 pm. Registration is requested for planning purposes, tickets can be found at <https://amblerambulanceweek.eventbrite.com>. Please join us for station and ambulance tours!



Wissahickon Valley Public Library – Ambler Branch

www.WPVL.org

209 Race St., Ambler PA 19002

Anne Hall, Branch Manager ahall@lclibs.org

215-646-1072

LIBRARY RENOVATION NEWS:

We're On the Move! The library will move to the Borough Hall building at 131 Rosemary Avenue in late spring/early summer during the renovation at 209 Race Street in Ambler.

The renovation for accessibility and expansion at 209 Race Street will take about one year.

We plan to launch the Summer Reading Program at the Borough Hall! Watch for moving date announcements on the library web site at www.wvpl.org



CHILDREN'S EVENTS AT AMBLER BRANCH LIBRARY

- **Guitar Story Times.** Tuesdays at 10:30 & Thursdays at 1:30pm.
- **Read to Smart T Pants!** 3rd Monday of the month, lovable therapy dog Smart T Pants visits the library, 4pm. Registration required.
- **April 22** – Juggling and Comedy Show-4pm
- **April 29** – Cute animals from the Elmwood Zoo- 4pm
- **Summer Reading Program Begins in June!** There will be special family programs Monday evenings at 6:30pm.
 - **June 17** – The Magic of Ari Paul Felber - 6:30
 - **June 24** – Juggler Al Grout - 6:30
 - **July 1** – Singer Peter Moses - 6:30
 - **July 8** – Magic and Mindreading - Steve Wallach - 6:30
 - **July 15** – Silly Songs with Silly Joe - 6:30
 - **July 22** – Music and Cartoon Drawings with Mr. Dave - 6:30
 - **July 29** – Fun Origami - 6:30
 - **Aug. 12** – Pizza Party and awards and prizes for readers - 6:30

ADULT PROGRAMS AT THE AMBLER BRANCH LIBRARY:

- **1st Wednesday Film Discussion.** Join us at Ambler Theater for a matinée movie and discussion.
- **Daytime Book Group** – 2nd Thursday each month at 2:30pm
- **Cook the Book Club** – Do you enjoy cooking, sharing, and sampling new recipes? Join Ambler's fun cookbook club! We meet every other month Wednesdays at 6pm. Call 215-646-1072 to join.
- **ESL Let's Talk Conversation Group.** Monday mornings. Registration required.
- **Yarn Café** – Weekly Fridays at 1pm and Tuesdays at 7pm
- **April Tea & Scones** – Music of the Big Band Era. Call for date and time
- **May 7** – Garden to Table Nutrition. 6:30pm
- **July 10** – Pharaoh's Flowers: The Botanical Treasures of King Tutankhamun's Tomb 6:30pm

PUBLIC SAFETY NOTES

Ambler Borough Police Department

Chief of Police Robert Hoffman



Message from New Chief of Police Robert Hoffman:

"I am both humbled and honored to become Ambler Borough's Chief of Police. I am grateful for the hard working officers of the Ambler Borough Police Department, who have always made public safety their number one priority. I look forward to leading this great department and serving this wonderful community."

The Borough of Ambler is a unique place to live, work, play and raise a family. At the Ambler Police Department we recognize that the oath we take is a symbol of public faith and public trust. I will continue to work hard to keep Ambler a safe admirable community. We have been successful in this endeavor due to the hard work and commitment of the officers in uniform, but also because of the partnerships and support we have from our community and the leadership of the Ambler Borough Council.

As the Chief of Police I intend to continue to serve the residents with pride. The following is our mission statement:

The members of the Ambler Borough Police Department are committed to providing professional, quality police service to the Borough of Ambler. We take responsibility in maintaining order, and protecting property for all the Ambler Borough Citizens. The Ambler Police also, take pride in defending and improving the quality of life for all members of the Ambler Borough Community and its visitors. Our objective is to maintain a safe and secure environment for all by interacting with the community, emphasizing the control and prevention of crime. We intend to provide fair, impartial efficient service to the public. We will accomplish this by maintaining order, protecting all constitutional freedoms and enforcing the law impartially. We exist to serve all people within our jurisdiction with respect, fairness and compassion. To fulfill this mission, the Ambler Borough Police Department is dedicated to providing a quality work environment and the development of its members through effective training and leadership.

PRESCRIPTION & OVER-THE-COUNTER DRUG DISPOSAL

Ambler's Police Department Lobby is now a convenient drug disposal location. The disposal unit is available 24/7. All drugs will be destroyed in a legal and environmentally-friendly manner. Check out our Facebook page -- Ambler Borough Police Department -- for further details.



Fire Safety Tips from the Fire Marshall

Rich Lockhart, Fire Marshall

Fire Safety – "Close the Door For Life" – As residential fires move through a home faster than ever, research has shown that simply closing your bedroom door when you sleep greatly increases your chances for survival. A closed door can provide occupants with a critical barrier against heat and smoke. It also gives them precious minutes to escape or be rescued, and also help to protect property. Underwriters Laboratories (UL) Firefighter Safety Research Institute conducted studies in July 2017 to try and show the differences between an open and closed bedroom door. In the 17 tests completed, it was determined that the room with the door closed was able to sustain life for as much as 10 minutes or longer, while the conditions in the room with an open door were untenable within approximately 5 minutes. With an ever-increasing number of synthetic products being brought into our homes, any advantage provided for you, your family and firefighters is of great benefit. While we know we can't prevent every fire from occurring, if we can prevent injuries or worse, it is a win for all. For more information, please visit www.closeyourdoor.org.



The Borough of Ambler would like to thank the businesses that appear in this newsletter and to recognize them each as supporters and cornerstones of our community. For it is with their contributions that this newsletter has been produced at no charge to our residents.

SISTERS PAINTING

INTERIOR & EXTERIOR PAINTING

Free Estimates • Insured
Power Washing • Deck Staining • Great Prep

215-817-6913

sisters2paint@aol.com
www.sisterspainting.com

Bobbi Ann Helmich

EBNER'S AUTO
EBNERSAUTO.COM

TIMOTHY J. EBNER
Owner



6 South Main Street (rear)
Ambler, PA 19002
(Driveway entrance on
Butler Ave)



State Inspection
Tune-ups
Mechanical and
Body repairs
**ALL Makes
& Models**
Electrical Specialist

Phone: 215-628-0881
Fax: 215-628-3910
Email: ebnersauto@gmail.com

"Come near to God and He will
come near to you" James 4:8

FREE STATE INSPECTION



Ambler

Extended Care Center

At Ambler Extended Care Center, our staff takes great pride in the care and service our residents receive every day. Ambler is a small friendly facility that has served the community for over 40 years, with services including:

- Short term rehabilitation services
- Long term skilled nursing services
- Hospice services
- Respite care
- Psychological & memory impaired support
- Recreational program 7 days a week
- Restorative nursing program 7 days a week
- Beautiful deck overlooking creek & wildlife



32 S. Bethlehem Pike ~ Ambler, PA 19002
215-646-7050 ~ 215-646-7644 fax

Insurance Shopper Agency

If you have State Farm, Allstate, Progressive or Geico...
Let us shop for you!

AUTO • HOME • COMMERCIAL

Established in 1979 and now located across from CVS in the heart of Ambler Borough

Family Owned and Operated
Let our Family take care of yours



PA INSURANCE DEPARTMENT STATES:
Choosing an insurance company is an important decision.
SO A GOOD RULE OF THUMB IS TO COMPARE AT LEAST THREE COMPANIES.

WE SHOP, YOU SAVE

Call us and start saving today!

877-386-2601 Toll Free • 215-642-0688 Direct
570-386-2600

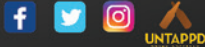
www.insuranceshopper.com
275 E. Butler Avenue • Ambler, PA 19002

**Brewery
and
Restaurant
Now Open**



131 E. Butler Avenue
Ambler, PA 19002
tanneryrun.com

Tuesday, Wednesday and Thursday | 4 - 11 PM
Kitchen closes at 9 PM
Friday and Saturday | 11 AM - Midnight
Kitchen closes at 10 PM
Sunday | 11 AM - 9 PM
Kitchen closes at 8 PM



Ambler Physical Therapy

amblerpt@gmail.com
45 Forest Avenue
Ambler, PA 19002

Dianne Miller, DPT, CIAYT
Physical Therapist, Yoga Therapist
phone 215.643.9250
fax 215.643.9251



Call/Text Us Today (484) 222-0689

visit us at www.PlumbProServices.com
info@plumbproservices.com



Serving Ambler and Montgomery County

Free Estimates

Residential • Commercial

- Water Treatment
- Water Heaters
- Drain Cleaning
- Sewer Camera Inspection
- Sump Pump & Drainage
- Plumbing Repair Services





AMBLER BOROUGH HALL

131 Rosemary Avenue, Ambler, PA 19002
215-646-1000

Fax: Administration 215-641-1355 Fax: Water 215-641-1921
Monday – Friday 8:00 am – 4:30 pm (closed Federal holidays)

Website: www.boroughofambler.com

Mayor Jeanne Sorg jsorg@borough.ambler.pa.us
Borough Manager Mary Aversa manager@borough.ambler.pa.us

AMBLER BOROUGH COUNCIL

WARD 1	WARD 2	WARD 3
Nancy Deininger Erin McKenna Endicott Francine Tomlinson	Sara Hertz, Vice President Glynnis Siskind Claudio Zaccone	Frank DeRuosi, President Nellie DiPietro Salvatore Pasceri

AMBLER COUNCIL COMMITTEES

Public Safety:	Mr. Zaccone (Chair), Mrs. Deininger, Mrs. Siskind
Public Utilities:	Mrs. Siskind (Chair), Mr. Pasceri, Ms. Tomlinson, Mr. Zaccone
Finance & Planning:	Ms. Tomlinson (Chair), Ms. DiPietro, Ms. Endicott
Parks & Recreation:	Ms. Hertz (Chair), Mrs. Deininger, Ms. Endicott
Salary & Personnel:	Mrs. Deininger (Chair), Ms. DiPietro, Mr. Pasceri, Mr. Zaccone

PUBLIC MEETING SCHEDULE – Ambler Borough Hall

1st Tuesday	Borough Committee – 7:00 pm (except October – meeting Wed., October 2) (except November – meeting Wed., November 6)
1st Thursday	Zoning Hearing Board (call for specific dates & times)
3rd Wednesday	Environmental Advisory Council (EAC) – 7:00 pm
3rd Tuesday	Borough Council Meeting – 7:00 pm (except May – meeting Wed., May 22)
3rd Thursday	Ambler Junior Baseball – 7:00 pm
4th Tuesday	Planning Commission – 7:00 pm
Last Tuesday	Ambler Main Street – 5:30 pm

EMERGENCY NUMBERS – Police, Fire, Rescue, Ambulance 9 – 1 – 1

NON-EMERGENCY & STAFF PHONE NUMBERS

Ambler Police (Chief Robert Hoffman) 215-646-1000 (8:00-4:30pm)	Ambler Police 215-643-6444 after hours
Wissahickon Fire Co. 215-646-1266	Fire Marshall Rick Lockhart 215-646-1000 ext 122
Community Ambulance Association of Ambler 215-643-4111	
Water Department Supervisor Philip Benigno 215-646-1000 ext 124 [pbenigno@borough.ambler.pa.us]	
Water Billing – 215-646-1000 (Cheryl x110 or Ruth x111)	Water Emergency – 215-646-1000 follow prompts
Waste Water Treatment Plant Supervisor Patrick Sarro Sr. 215-628-9457 [Awwtptsupt@borough.ambler.pa.us]	
Code Enforcement Officer Glenn Kucher 215-646-1000 ext 112 [code@borough.ambler.pa.us]	
Public Works Supervisor Marco Resente 215-628-9409 (leave message or call 215-646-1000 '0' Receptionist)	
Finance Manager Gail Gordon 215-646-1000 ext 107 [ggordon@borough.ambler.pa.us]	
Manager's Assistant Elizabeth Russell 215-646-1000 ext 113 or 114 [erussell@borough.ambler.pa.us]	
Borough Receptionist Melissa Reale 215-646-1000 dial "0"	

VOTER INFORMATION – www.montcopa.org/voterservices

AMBLER WARD 1	-	WISSAHICKON FIRE COMPANY, 245 Race Street
AMBLER WARD 2	-	MONTCO SAAC CENTER, 45 Forest Avenue
AMBLER WARD 3	-	CALVARY METHODIST CHURCH, 16 E. Park Avenue

PA018147

JMTawnings

*The Quality, Reliability
 & Experience You Expect*

215-659-5239
 www.jmtawnings.com

perfecta
 Retractable Fabric Awnings
 Manufactured Locally

RECOMMENDED

 SKIN
 CANCER
 FOUNDATION

Follow Us for Events
 & Special Deals!

Rita's
 Ice - Custard - Happiness

Rita's of Ambler

3 GELATIS
 (REG SIZE)
FOR \$9.99 plus tax

Valid Only at Ambler
 Not valid with any other offer. Limit
 one offer per guest. Expires 9/30/19.

BUY 2, GET 1 FREE
TREATS ONLY
 Excludes quarts and
 party packs.

Valid Only at Ambler
 Not valid with any other offer. Limit
 one offer per guest. Expires 9/30/19.

100 E. Butler Ave, Ambler, PA 19002 • 215-367-5977

JOHN E. LUSKIN
 & SON
PLUMBING & HEATING

Sewer & Drain Services
 Water Heaters • Sump Pumps • Video Pipeline Inspection
 High Pressure Water Jetting • Boilers • Hot Water Heating
 Residential • Commercial • Industrial

281 East Butler Ave. • Ambler, PA 19002
 Office: 215-643-1188 • Fax: 215-643-0758
 LuskinPlumbing.com

At the Co-op, fresh, delicious food is just the beginning. Nourish your family. Discover local foods. Connect with others and help build a strong community. It all comes together at the Co-op.

weavers waycoop
Ambler
 Everyone can shop,
 anyone can join.
 www.weaversway.coop

+community
 locally grown, community owned

Salvatore A. Boccuti, REALTOR®

Dedicated
 to Outstanding Service
Committed
 to Excellence
Attentive
 to Details
Experienced
 in Construction Industry
Lifelong Resident
 of Ambler

Dan Helwig, Inc. - REALTORS®
 1415 Bethlehem Pike
 Flourtown, PA 19031
 215-233-5000 Ext. 138
 215-837-2256 (cell)
 Salb@DanHelwigRealtors.com

**Dan Helwig, Inc.
 REALTORS®**

BOROUGH OF AMBLER

131 Rosemary Avenue
Ambler, PA 19002

Prsrt Std
U.S. Postage
PAID
Permit #38
Southeastern, PA

Spring/Summer 2019



THIS COMMUNITY NEWSLETTER IS PRODUCED FOR BOROUGH OF AMBLER
BY HOMETOWN PRESS • 215.257.1500 • ALL RIGHTS RESERVED®

To Place An Ad Call Rosemary At Hometown Press • 215-805-2121

COSTA DELI

Italian Specialties
CostaDeli.net

Best Milkshake

in Town Since 1950

Open for Breakfast, Lunch and Dinner
901 East Butler Pike, Ambler, PA • 215.646.6173

Awarded best of the best Cupcakes!

Trust Pi Dental Center For Your Advanced Dental Care

Glenn J Wolfinger DMD FACP
Pi Dental Center
467 Pennsylvania Avenue Suite 201
Fort Washington PA
215-646-6334 • pidentalcenter.com

Above: Dr. Wolfinger with Dr. Rob Slauch who will be joining Pi in July 2019.

the Y
YMCA

**FOR YOUTH DEVELOPMENT®
FOR HEALTHY LIVING
FOR SOCIAL RESPONSIBILITY**

**MOVE, GROW, EXPLORE.
DANCE, SWIM, SCORE!**
Ambler Area YMCA

Learn something new at the Ambler Y and discover a community of health, fitness and fun for adults and children of all ages. There is something for everyone at the Y!

AMBLER AREA YMCA
1325 McKean Road
Ambler, PA 19002
215-628-9950
philaymca.org