

From: Peter Benz <peter@planthealthsolutions.com>
Sent: Sunday, August 4, 2024 11:00 AM
To: Jim Dougherty <JDOUGHERTY@gilmore-assoc.com>
Cc: Glenn Kucher <code@Borough.Ambler.pa.us>; Mary Aversa <maversa@borough.ambler.pa.us>
Subject: Re: Picking Field, Ambler plans

Hello Jim, Glenn and Mary,

I will follow this email with a marked plan of Pickering Field, with the 6 trees labeled for removal that I am recommending. These trees have the following issues, which will lead to their eventual decline:

- Extensive grafted, girdling roots
- Extensive root damage from past mowing equipment
- Weeping Canker
- Brittle Cinder Fungus

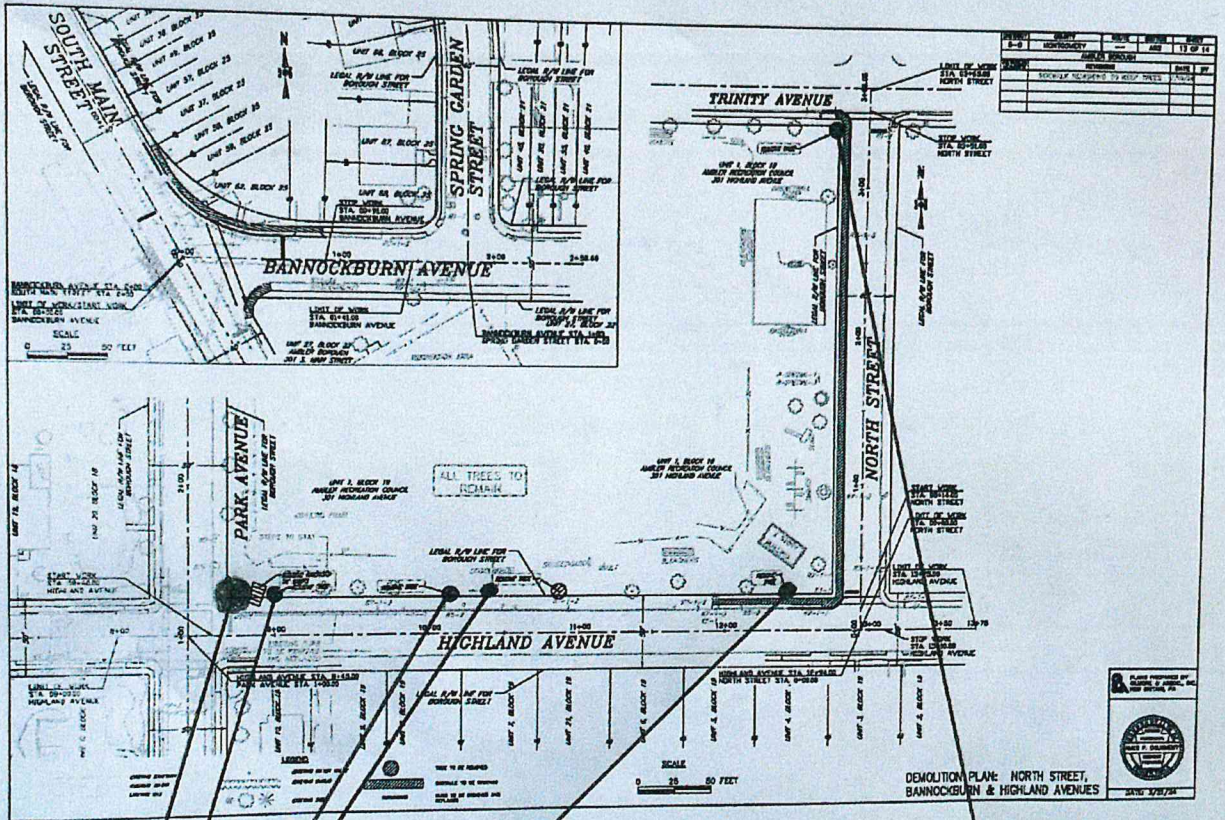
It does not make sense to spend money on treatments which will not save these trees. If left in place, their decline would accelerate, causing canopy dieback and falling limbs in high traffic areas.

Trees recommended for removal:

- 1 - 21" DBH Horse Chestnut
- 2 - 22" DBH Horse Chestnut
- 3 - 20" DBH Horse Chestnut
- 4 - 22.5" DBH Burr Oak
- 5 - 31" DBH Horse Chestnut
- 6 - 18" DBH Horse Chestnut

Best regards, Peter Benz

Peter Benz
ISA Certified Arborist
Plant Health Solutions, Inc.
215-262-2409
www.planthealthsolutions.com



PHS Recommend Removal of the following trees

- 1- 21" DBH Horse Chestnut
- 2- 22" DBH Horse Chestnut
- 3- 20" DBH Horse Chestnut
- 4- 22.5" DBH Burr Oak
- 5- 31" DBH Horse Chestnut

6- 18" Horse Chestnut

