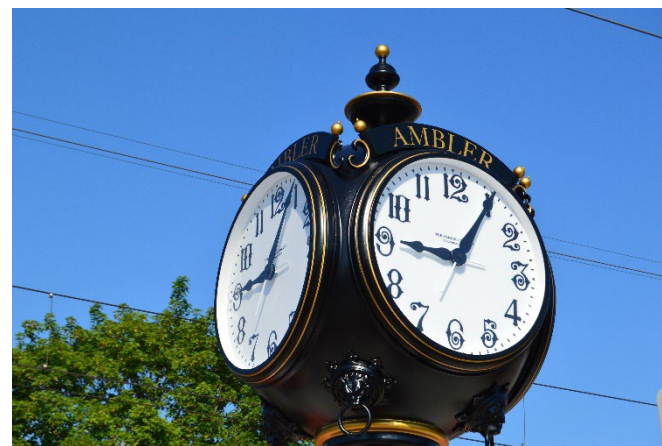
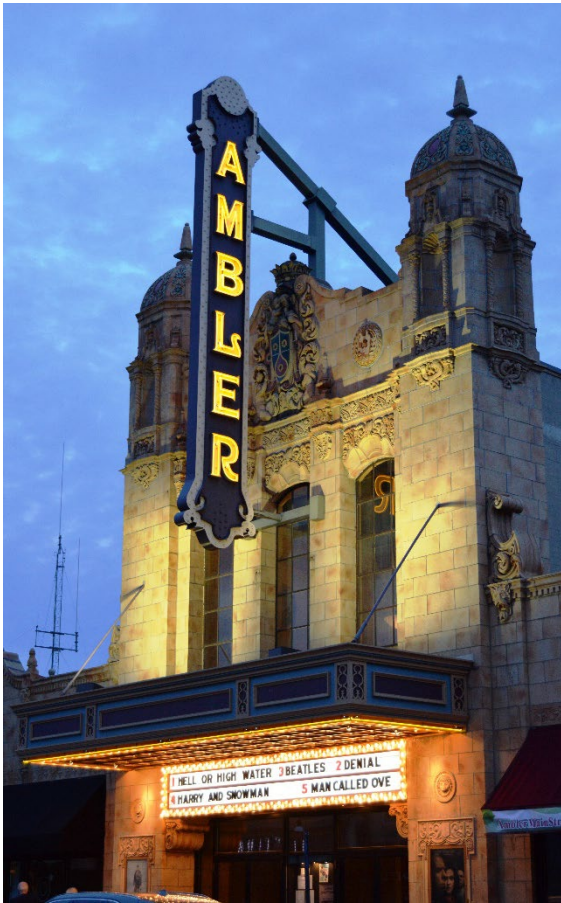


COMPREHENSIVE PLAN OPEN HOUSE

January 28, 2025 | 6:00 – 8:00 PM



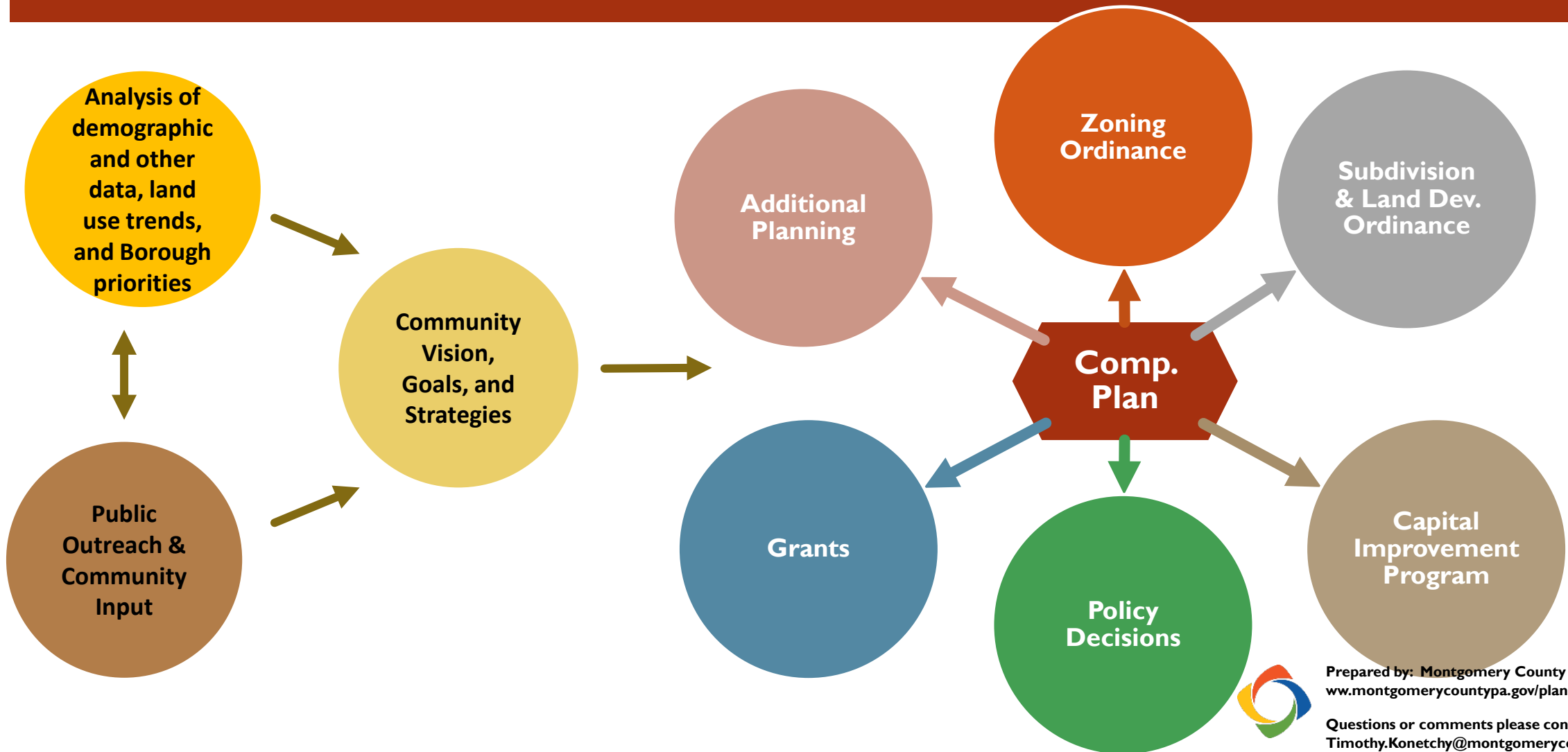
**BOROUGH OF
AMBLER**



Prepared by: Montgomery County Planning Commission
www.montgomerycountypa.gov/planning

Questions or comments please contact: Tim Konetchy at
Timothy.Konetchy@montgomerycountypa.gov

WHAT IS A COMPREHENSIVE PLAN?



COMPREHENSIVE PLAN ELEMENTS

- The PA Municipalities Planning Code (“Act 247”) requires the following:
 - Statement of **Objectives**
 - Plan for **Land Use**
 - Plan to Meet **Housing** Needs
 - Plan for **Movement of People and Goods**
 - Plan for **Community Facilities and Utilities**
 - Plan for the Protection of **Natural and Historic Resources**
 - Plan for the Reliable Supply of **Water**
 - Discussion of Short- and Long-Range **Implementation Strategies**
 - Statement of the **Interrelationships** between Plan Components
 - Statement of **Consistency** with Adjacent Municipalities’ and County Comp. Plans



PLANNING PROCESS

- **Planning Commission – Meets Monthly**
 - Continue to analyze background information (data analysis)
 - Review and interpret public input, and then begin to formulate draft vision, goals, and strategies
 - Plan for future public outreach events
- **Opportunities for Input:**
 - Community survey (closes February 28)
 - Public outreach at community events and comprehensive plan open houses/visioning sessions will continue through Winter 2025/2026
 - **The Planning Commission meets at 7 PM on 4th Tuesday of each month. Check the borough website for the agenda ahead of time!**



ANTICIPATED TIMELINE

Winter 2024	Spring 2024	Summer 2024	Fall 2024	Winter 2024/25	Spring 2025	Summer 2025	Fall 2025	Winter 2025/26	Spring 2026	Summer 2026	Fall 2026	
Phase I: Kickoff	<i>T.O.D. Zoning Amendment Project</i>											
			Phase 2: Background Research and Analysis									
			Phase 3: Engagement Part I									
						Phase 4: Synthesis & Planning						
									Phase 5: Engagement Part 2			
									Phase 6: Draft Review			
									Phase 7: Adoption			

Planning Phases

Public Engagement Phases



Prepared by: Montgomery County Planning Commission
www.montgomerycountypa.gov/planning

Questions or comments please contact: Tim Konetchy at
Timothy.Konetchy@montgomerycountypa.gov

Share Your Thoughts!

There are six stations throughout the room. **Make sure to visit them all!**

- 1. Welcome & Background Information**
- 2. Housing & Neighborhoods**
- 3. Open Space & Sustainability**
- 4. Economic Development**
- 5. Transportation**
- 6. Vision Wall & Place-Making, Place-Keeping Map**



Prepared by: Montgomery County Planning Commission
www.montgomerycountypa.gov/planning

Questions or comments please contact: Tim Konetchy at
Timothy.Konetchy@montgomerycountypa.gov