

WELCOME TO AMBLER BOROUGH'S COMPREHENSIVE PLAN OPEN HOUSE!

A comprehensive plan describes the long-range vision for a community. The plan will be developed through extensive study and public outreach. The plan will reflect the community's goals and guide the policies and projects to reach them. Your questions and feedback are important to us and will help to shape the plan. The plan will cover the following topics:

Demographic Trends
Current & Future Land Use
Economy & Employment
Homes & Housing
Infrastructure & Utilities
Transportation

Natural Resources
Sustainability
Open Space & Recreation
Cultural Resources
Community Facilities
...and much more!

Take the Community Survey!



(Scan QR code!)

COMPREHENSIVE PLAN TIMELINE

WINTER 2024 → **FALL 2024 - FALL 2025** → **WINTER 2025 - 2026** → **SPRING 2026** → **SUMMER/FALL 2026**
Kickoff Public Outreach & Background Research Public Outreach & Plan Refinement Draft Review Public Comment & Adoption



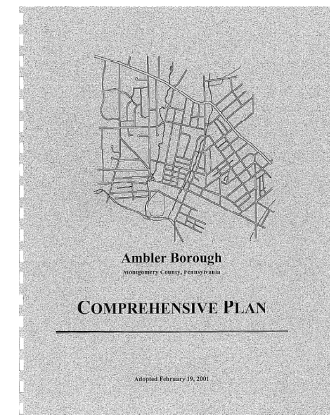
BOROUGH OF AMBLER
COMPREHENSIVE PLAN



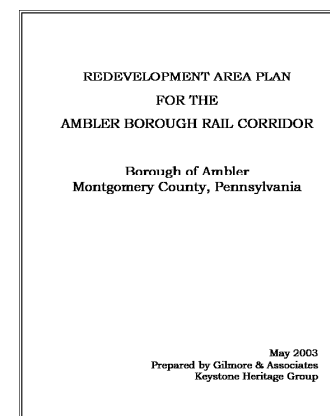
Prepared by:
Montgomery County Planning Commission
www.montgomerycountypa.gov/planning

Questions or comments please contact: Tim Konetchy at
Timothy.Konetchy@montgomerycountypa.gov or 610-2924917

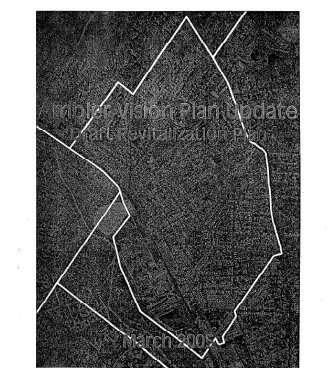
SUMMARY OF PAST PLANNING EFFORTS



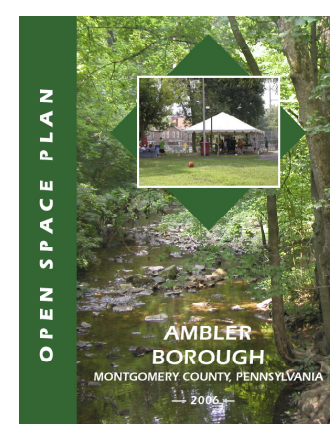
2001 – COMPREHENSIVE PLAN



2003 – REDEVELOPMENT AREA PLAN FOR THE AMBLER BOROUGH RAIL CORRIDOR



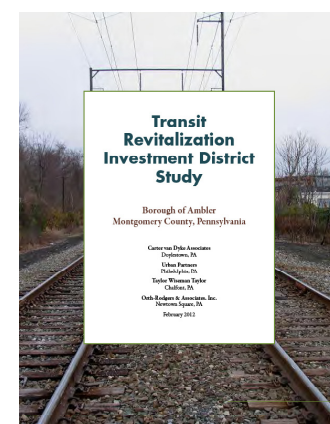
2005 – REVITALIZATION PLAN



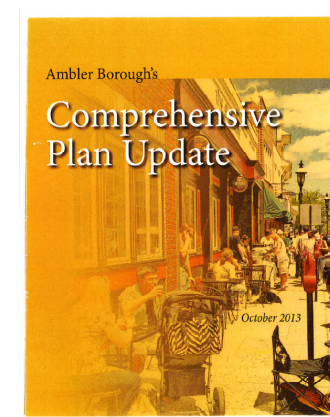
2006 – OPEN SPACE PLAN



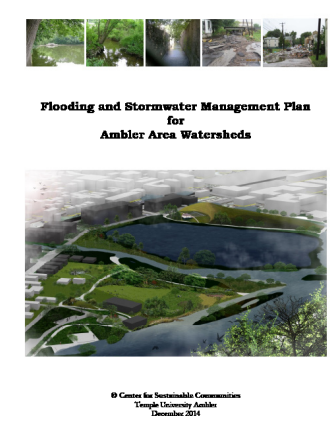
2008 – A PARKING ACTION PLAN FOR THE BOROUGH OF AMBLER



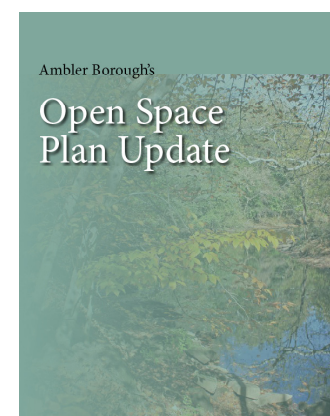
2012 – TRANSIT REVITALIZATION INVESTMENT DISTRICT STUDY



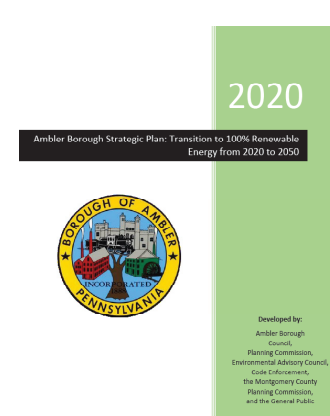
2013 – COMPREHENSIVE PLAN UPDATE



2014 – FLOODING AND STORMWATER MANAGEMENT PLAN FOR AMBLER AREA WATERSHEDS



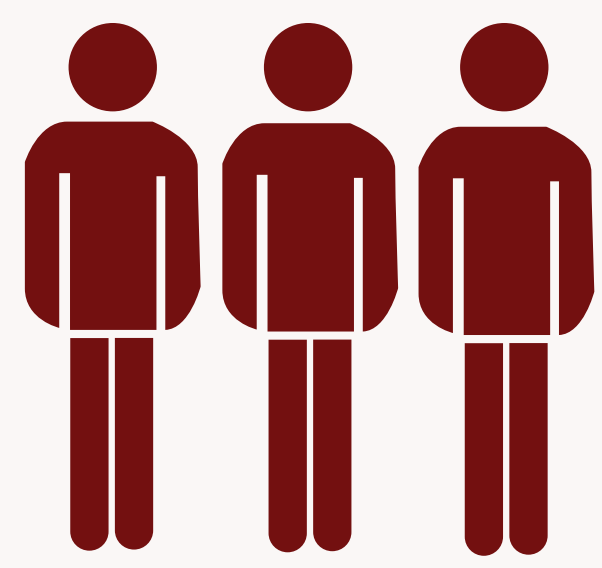
2019 – OPEN SPACE PLAN UPDATE



2020 – STRATEGIC PLAN: TRANSITION TO 100% RENEWABLE ENERGY FROM 2020 TO 2050



POPULATION AND INFRASTRUCTURE SNAPSHOT



Population¹

Population:
6,807

Population Growth, 2010-2020:
6.1% or +390 persons

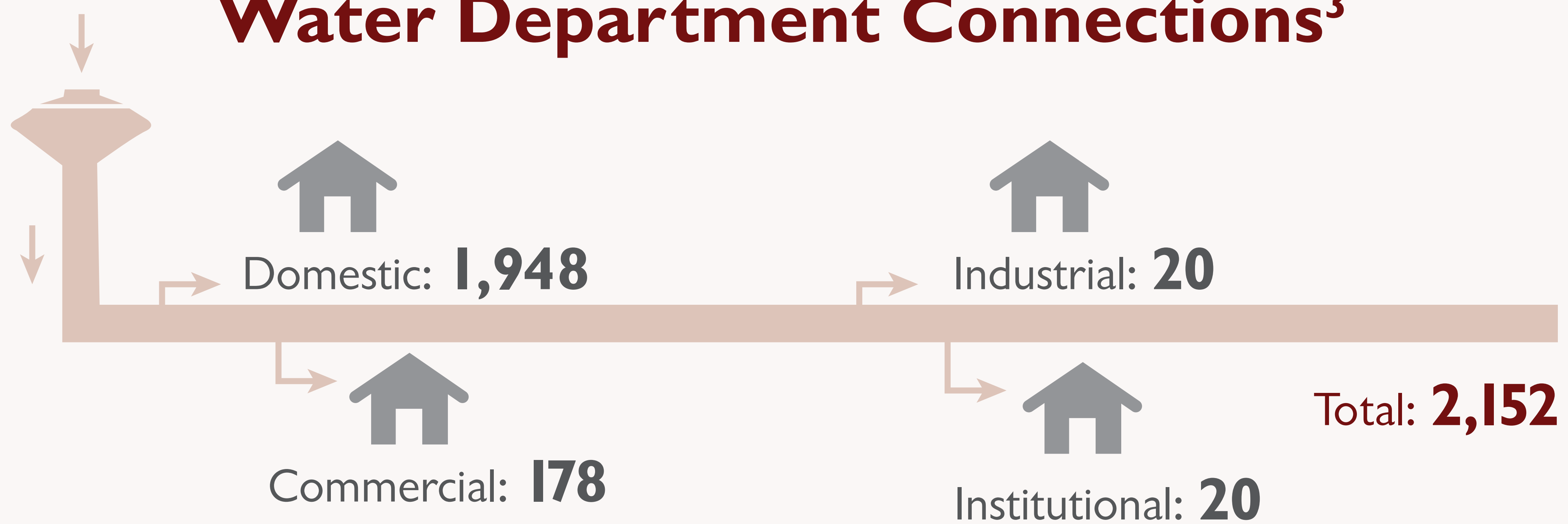


Median Age²

Ambler:
37.5

Montgomery County:
41.3

Water Department Connections³



Also serves: Lower Gwynedd, Whitemarsh, Whitpain, and Upper Dublin Townships

Data Sources:

¹ Decennial Census (2010; 2020)

² 5-Year American Community Survey (2020)

³ Montgomery County (2018)

⁴ Montgomery County (2015)

Wastewater Treatment Plant⁴

Capacity: **6.5 Million Gallons/Day**

Avg. Daily Flow: **5.2 Million Gallons/Day**

Excess Capacity: None, but upgrades occur as new connections are proposed

Also serves: Lower Gwynedd, Whitemarsh, Whitpain, and Upper Dublin Townships



SHARE YOUR THOUGHTS ON HOUSING & NEIGHBORHOODS

	Agree	Neutral or Don't Know	Disagree
My neighborhood reflects my community: there are households of varying incomes, backgrounds, races, ethnicities, and living arrangements.			
The borough should continue to allow the construction of various types of residential development. Offering an array of dwelling types, layouts, and sizes allows households with different needs to choose to live here.			
There are housing options within the community that are affordable at all income levels.			
Aging residents have access to housing options that would allow them to continue to live in the community.			
Additional support is needed for _____. (for example, first time homebuyer education or senior home repair)			
The borough should promote historic preservation through the preservation of historical and cultural resources, outreach and education, and through recognition programs (such as plaques).			

**Please use a post-it to note your level of agreement and to explain why you feel that way
Please feel free to ask questions of the Planning Commissioners and Planners at each station!**



BOROUGH OF AMBLER COMPREHENSIVE PLAN



Prepared by:

Montgomery County Planning Commission
www.montgomerycountypa.gov/planning

Questions or comments please contact: Tim Konetchy at
Timothy.Konetchy@montgomerycountypa.gov or 610-2924917

HOUSING SNAPSHOT

Owner-Occupancy¹



Own: **53.3%**



Rent: **46.7%**

Households¹



2,650 (+46 from 2010)

Average Household Size¹

2.5 Overall

2.7 Owners

2.2 Renters

Dwelling Units^{2,3}

2,750 Total



Single-family detached
36%



Single-family attached
(twin or townhome)
31%



Duplex
7%



Multifamily
28%



In 2023, 64 homes sold in at a median sale price of **\$430,000** nearly 50% more than in 2013 (adjusted for inflation).

Cost Burdened Housholds^{3,4}

Renters: **41.8%** (County: 46.7%)

Owner with Mortgage: **22.1%** (County: 23.4%)

Data Sources:

- ¹ Decennial Census (2020)
- ² Montgomery County Board of Assessment Appeals
- ³ 5-Year American Community Survey (2022)
- ⁴ Defined as households expending < 30% of gross income on housing expenses



SHARE YOUR THOUGHTS ON NATURAL RESOURCES & OPEN SPACE

	Agree	Neutral or Don't Know	Disagree
More recreation opportunities are needed for _____. For example, school-aged children, teens, seniors, or another subset of the population.			
Additional trails should be built throughout the borough and connecting to neighboring townships.			
The borough should work to preserve and enhance open space and natural resources.			
The borough should proactively study how to mitigate the impacts of climate change and adapt to a changing climate.			
The borough should actively work towards increasing the tree canopy through increased planting along streets and at borough parks and properties.			
The borough should focus on mitigating flood risk through all available avenues: green stormwater infrastructure, retention basins, increased landscaping, floodproofing, assisting with getting people and property out of flood-prone properties (e.g., post-disaster property buy-outs), etc.			

**Please use a post-it to note your level of agreement and to explain why you feel that way
Please feel free to ask questions of the Planning Commissioners and Planners at each station!**



BOROUGH OF AMBLER COMPREHENSIVE PLAN



Prepared by:

Montgomery County Planning Commission
www.montgomerycountypa.gov/planning

Questions or comments please contact: Tim Konetchy at
Timothy.Konetchy@montgomerycountypa.gov or 610-2924917

NATURAL RESOURCES & OPEN SPACE SNAPSHOT

Watershed

Wissahickon Watershed

Waterways

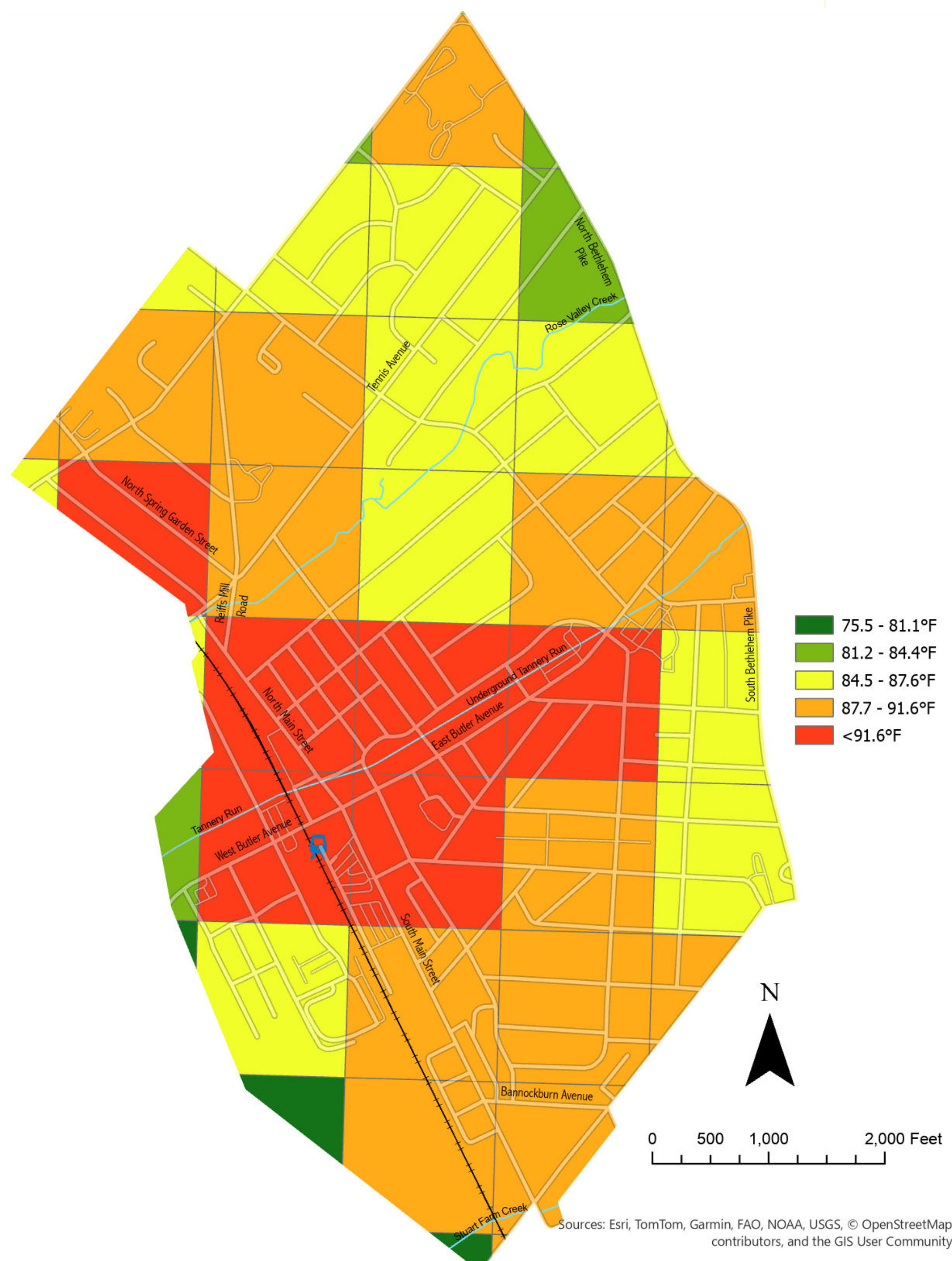
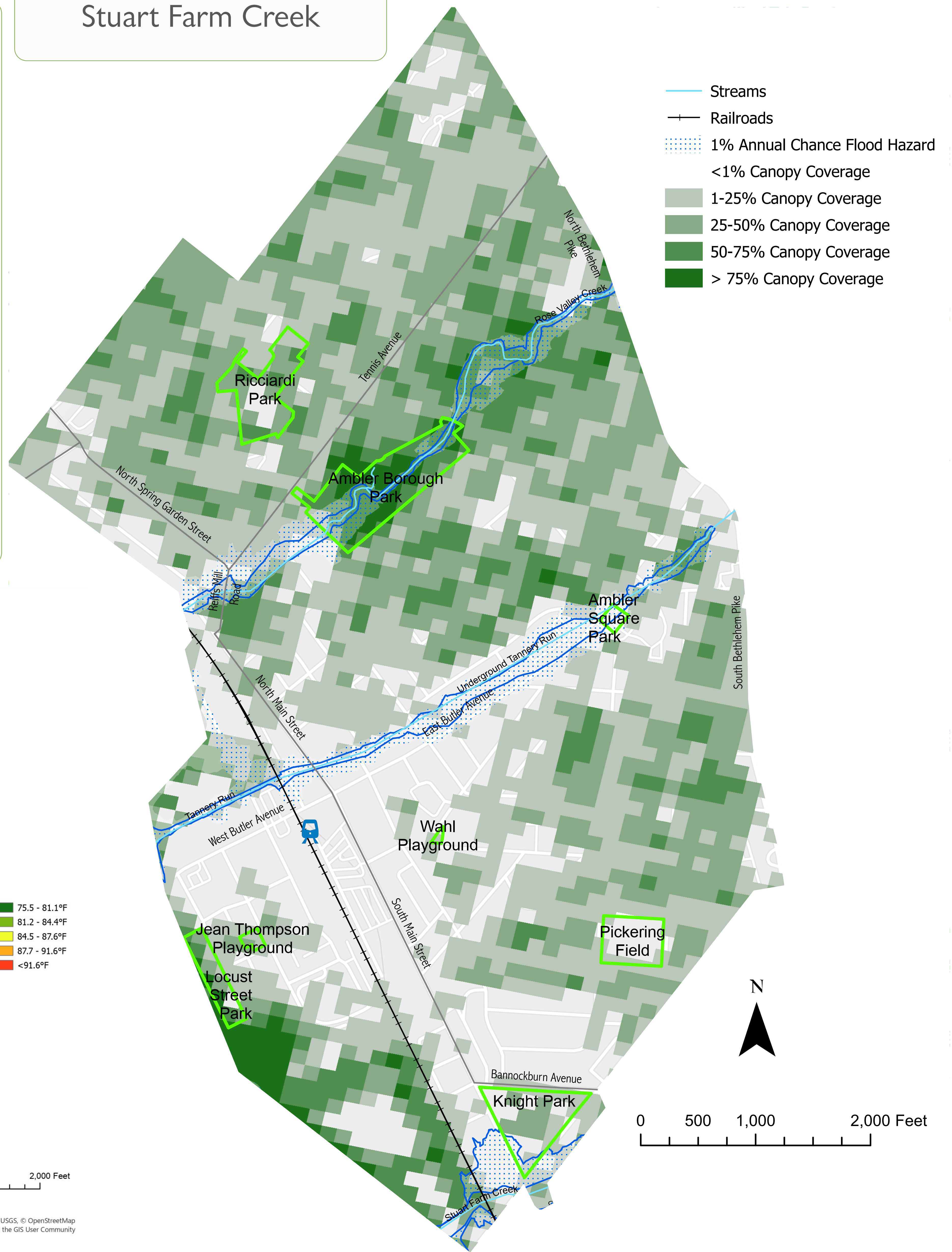
Rose Valley Creek
Tannery Run
Stuart Farm Creek

Parks

Total 23.5 Acres

Tree Canopy & Surface Temperatures

The most densely developed and least forested areas of the borough see increased ambient air temperatures. This is known as the heat island effect, where buildings and parking lots absorb and then slowly release heat



BOROUGH OF AMBLER COMPREHENSIVE PLAN



Prepared by:
Montgomery County Planning Commission
www.montgomerycountypa.gov/planning

Questions or comments please contact: Tim Konetchy at
Timothy.Konetchy@montgomerycountypa.gov or 610-2924917

SHARE YOUR THOUGHTS ON TRANSPORTATION

	Agree	Neutral or Don't Know	Disagree
The borough should improve _____. (street, intersection, or a mode of transportation)			
The borough should prioritize improvements to bus stops and the train station.			
The borough should prioritize addressing any gaps in the sidewalk network and address safety or maintenance concerns with existing sidewalks.			
The borough should promote bicycling through the addition of on-road infrastructure (signage and sharrows, bike lanes, etc.)			
The borough should study how/where to implement traffic calming measures			

Please use a post-it to note your level of agreement and to explain why you feel that way
Please feel free to ask questions of the Planning Commissioners and Planners at each station!



BOROUGH OF AMBLER COMPREHENSIVE PLAN



Prepared by:
Montgomery County Planning Commission
www.montgomerycountypa.gov/planning

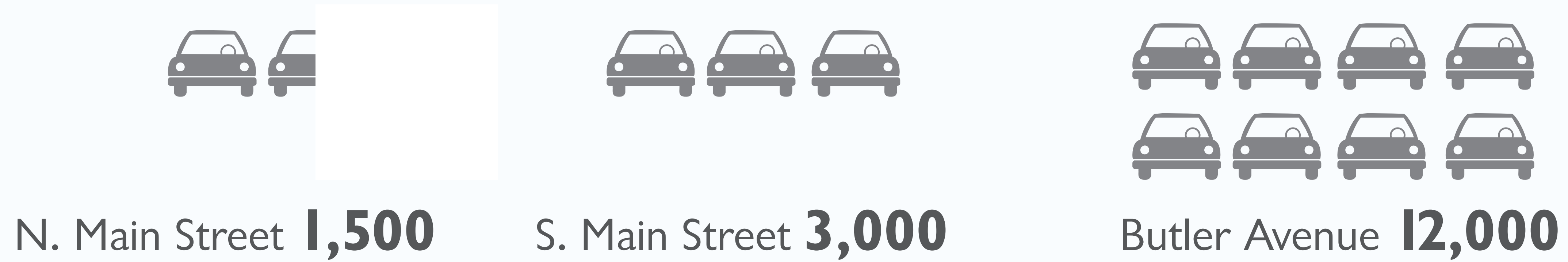
Questions or comments please contact: Tim Konetchy at
Timothy.Konetchy@montgomerycountypa.gov or 610-2924917

TRANSPORTATION SNAPSHOT

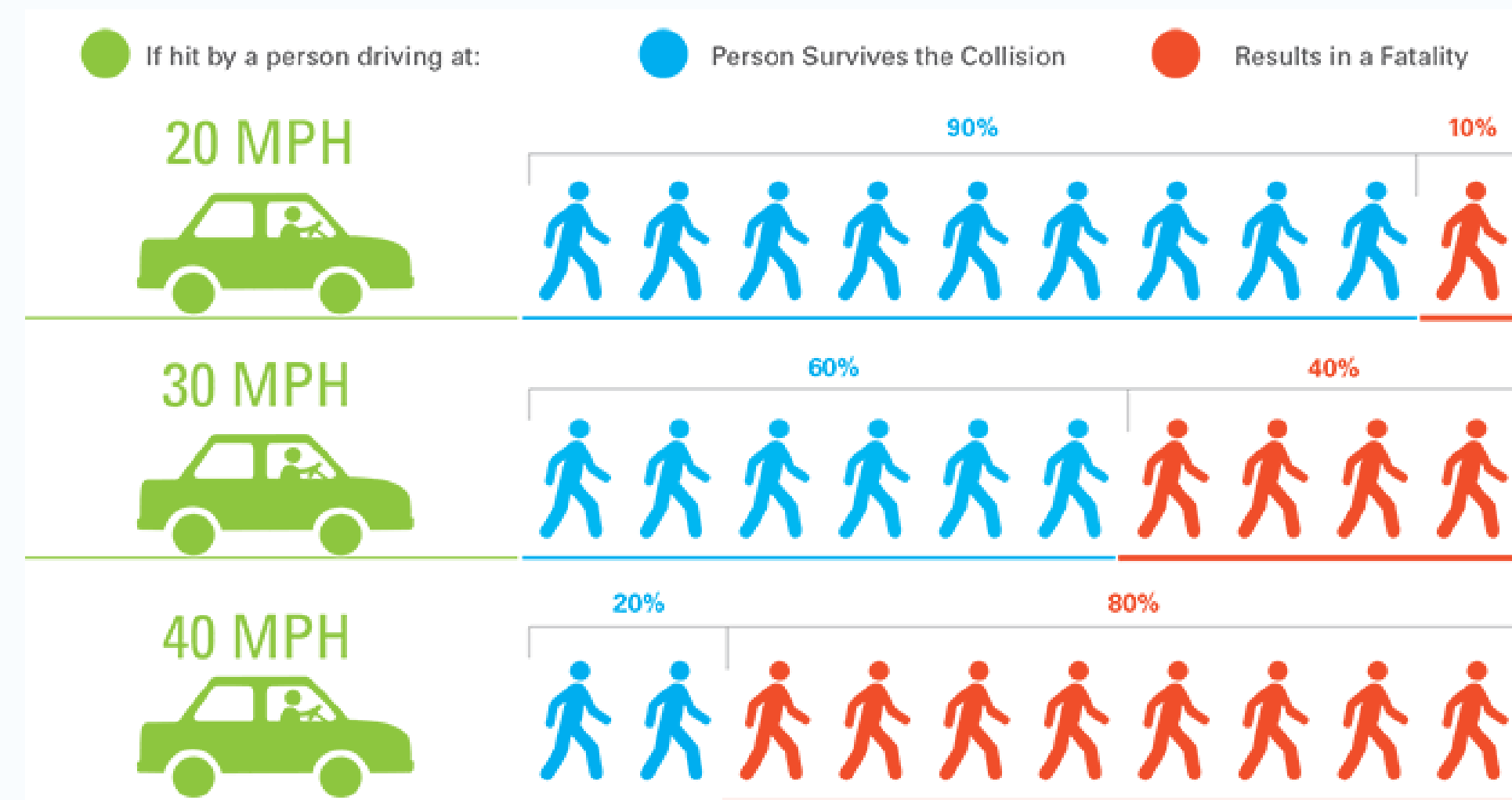
Traffic Volumes

Average Daily Traffic Counts

Source: DVRPC



Safety



- 67 vehicle crashes occurred between 2019 and 2023.
- Butler Avenue saw the most vehicle crashes.
- Traffic calming measures (physical changes to a roadway) can be employed to improve safety of all road users.

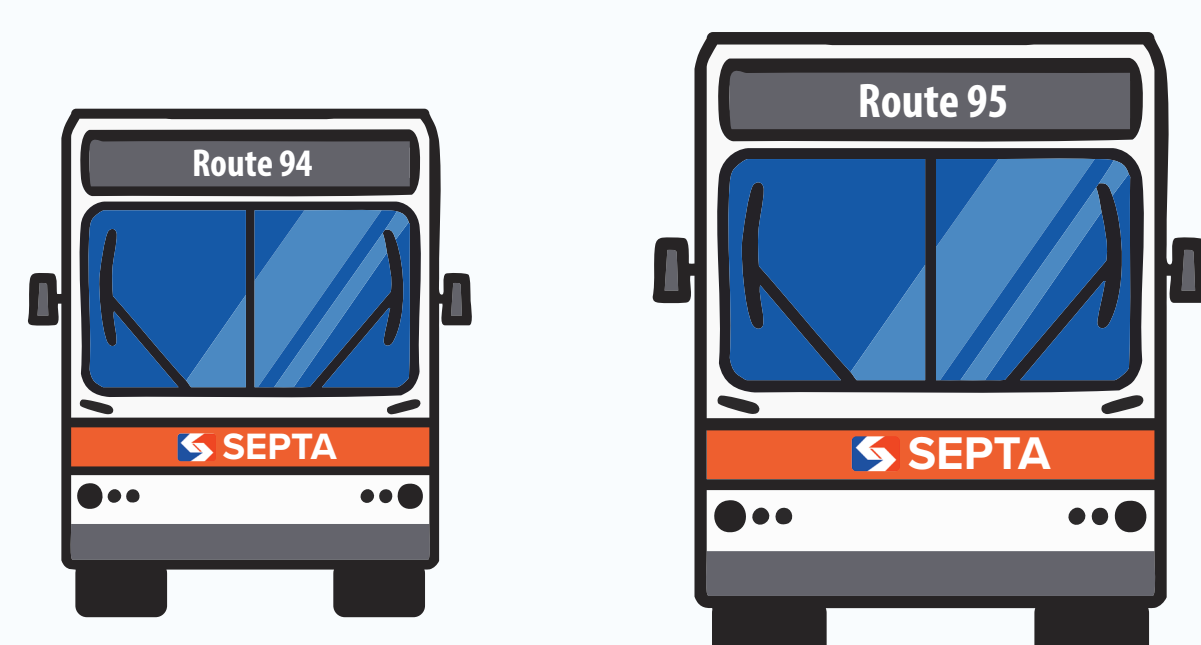
Source: PennDOT

Pedestrians & Bicyclists

- Much of the borough is connected by sidewalks .
- There are no designated bike routes within the borough.



Transit



Ambler Station sees the 12th highest number of weekday riders in the county, with well over 100,000 annual trips

SEPTA Bus Routes 94 and 95 service Ambler.

Source: SEPTA



SHARE YOUR THOUGHTS ON ECONOMIC DEVELOPMENT

	Agree	Neutral or Don't Know	Disagree
Ambler needs more _____ businesses. For example, restaurants, entertainment, clothing., cafes.			
Commercial areas in the borough need more_____ For example: benches, street lights, trees, sidewalks, landscaping, crosswalks.			
The businesses in Ambler are easily accessible for all users (walkers, bikers, transit-users, drivers, wheelchair users).			
I frequently patronize businesses in the borough.			
I attend borough events, such as the Ambler Auto Show, Arts & Music Festival, Fire and Ice Festival, Holiday Parades, Oktoberfest, First Fridays, Small Business Saturdays, and restaurant week			

**Please use a post-it to note your level of agreement and to explain why you feel that way
Please feel free to ask questions of the Planning Commissioners and Planners at each station!**



BOROUGH OF AMBLER COMPREHENSIVE PLAN



Prepared by:

Montgomery County Planning Commission
www.montgomerycountypa.gov/planning

Questions or comments please contact: Tim Konetchy at
Timothy.Konetchy@montgomerycountypa.gov or 610-2924917

LOCAL ECONOMY SNAPSHOT

Median Household Income¹



\$74,868

Top 5 Resident Jobs by Sector¹

Healthcare and Social Assistance **18.8%**
Professional, Scientific, and Technical Services **13.8%**
Retail Trade **10.6%**
Finance and Insurance **8.2%**
Manufacturing **7.1%**



Remote Work Has Risen Drastically from 2021 to 2022^{1,2}

13.3% → 20.3%

Top 5 Jobs by Sector in Ambler¹

Professional, Scientific, and Technical Services **26.1%**
Healthcare and Social Assistance **16.9%**
Construction **13.5%**
Accommodation and Food Service **9.6%**
Wholesale Trade **8.3%**

Top 5 Places of Work¹

Ambler Borough (including remote work)
City of Philadelphia
Upper Dublin Township
Horsham Township
Whitpain Township

Data Sources:

- ¹ 5-Year American Community Survey, 2021
² 5-Year American Community Survey, 2022



PLACE KEEPING & PLACE MAKING

Please add comments to the map or the nearby Vision Board!



Placemaking is a collaborative process whereby the community works to strategically shape and activate the social, physical, and cultural aspects of its public spaces.

Placekeeping is a similar process whereby the community collaborates on ways to improve or enhance current resources to amplify the social, physical, and cultural aspects of its public spaces.



BOROUGH OF AMBLER COMPREHENSIVE PLAN



Prepared by:
Montgomery County Planning Commission
www.montgomerycountypa.gov/planning

Questions or comments please contact: Tim Konetchy at
Timothy.Konetchy@montgomerycountypa.gov or 610-2924917

